

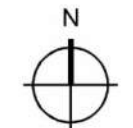


THE STANDARD AT SYRACUSE
910 MADISON STREET, SYRACUSE NY
SEPTEMBER 21, 2022
NTS



PERSPECTIVE FROM MADISON STREET/UNIVERSITY AVE

CUBE 3 | 370 Merrimack Street Suite 337, Entrance "F" | Lawrence, MA 01843 | 978.989.9900 | www.cube3.com





THE STANDARD AT SYRACUSE
910 MADISON STREET, SYRACUSE NY
SEPTEMBER 21, 2022
NTS



AERIAL FROM MADISON STREET/UNIVERSITY AVE

CUBE 3 | 370 Merrimack Street Suite 337, Entrance "F" | Lawrence, MA 01843 | 978.989.9900 | www.cube3.com





THE STANDARD AT SYRACUSE
910 MADISON STREET, SYRACUSE NY
SEPTEMBER 21, 2022
NTS



AERIAL FROM UNIVERSITY AVENUE

CUBE 3 | 370 Merrimack Street Suite 337, Entrance "F" | Lawrence, MA 01843 | 978.989.9900 | www.cube3.com



COPYRIGHT (C) 2021 CUBE 3 STUDIO LLC, ALL RIGHTS RESERVED



THE STANDARD AT SYRACUSE
910 MADISON STREET, SYRACUSE NY
SEPTEMBER 21, 2022
NTS

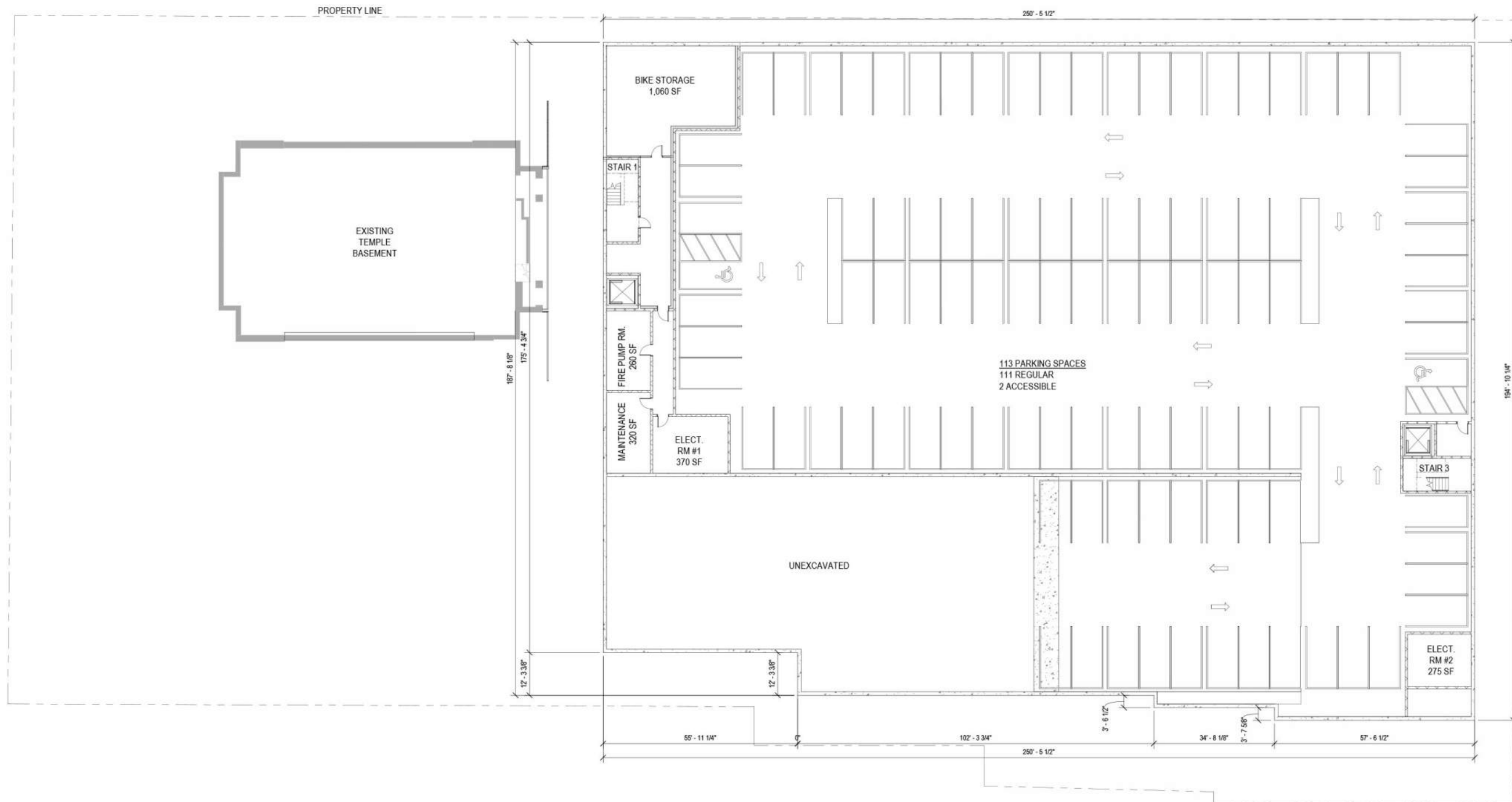


AERIAL FROM MADISON STREET

CUBE 3 | 370 Merrimack Street Suite 337, Entrance "F" | Lawrence, MA 01843 | 978.989.9900 | www.cube3.com



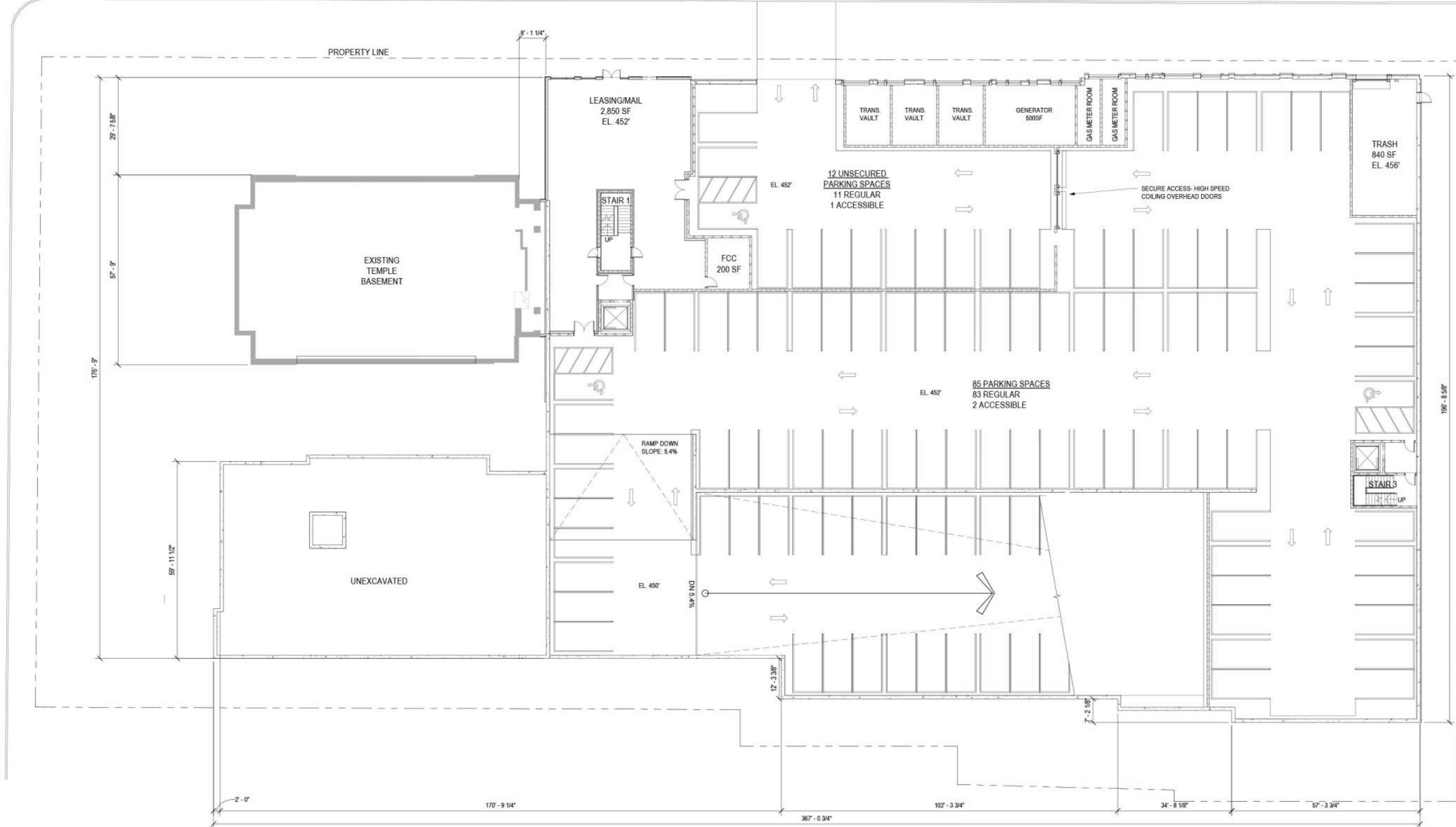
COPYRIGHT (C) 2021 CUBE 3 STUDIO LLC, ALL RIGHTS RESERVED

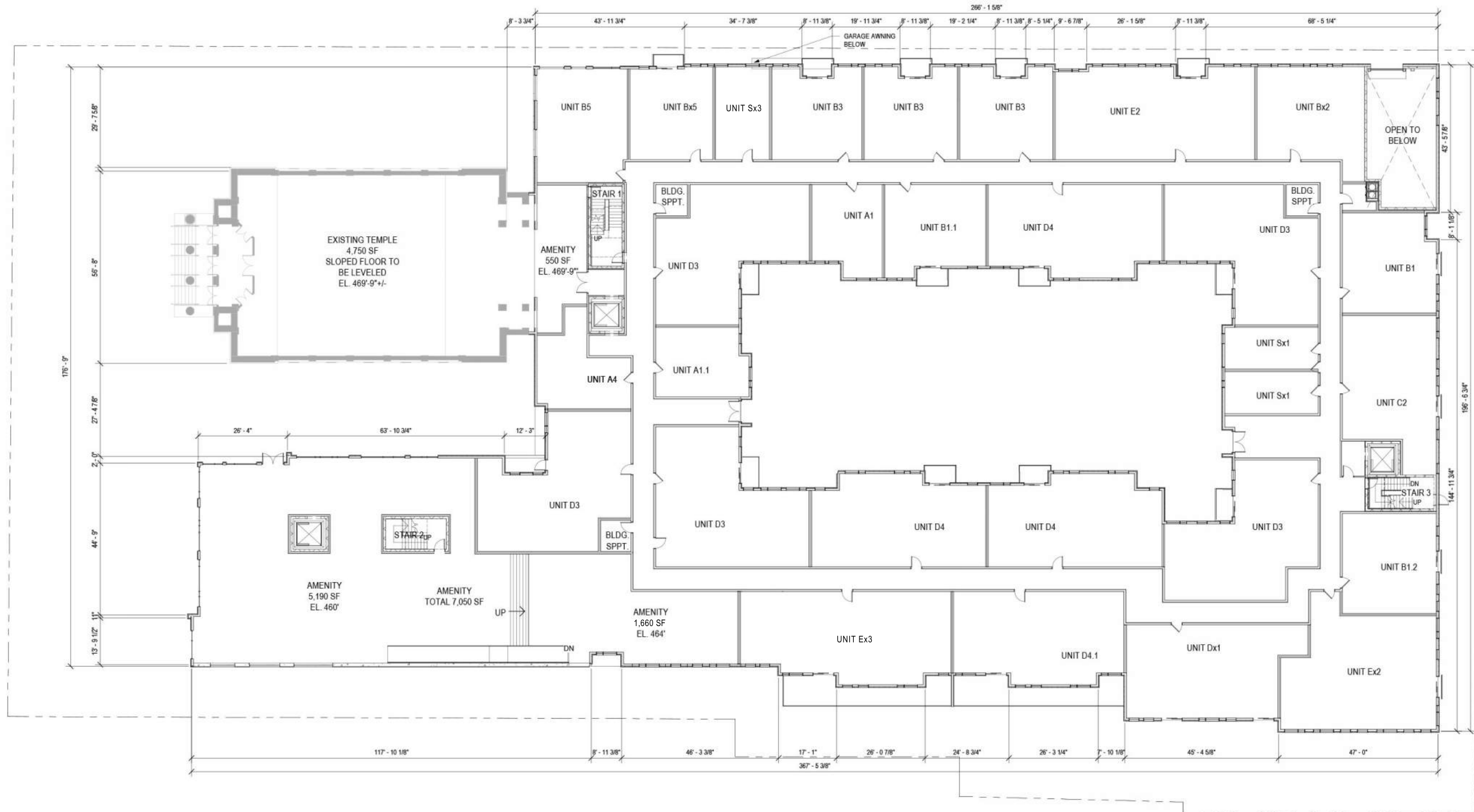


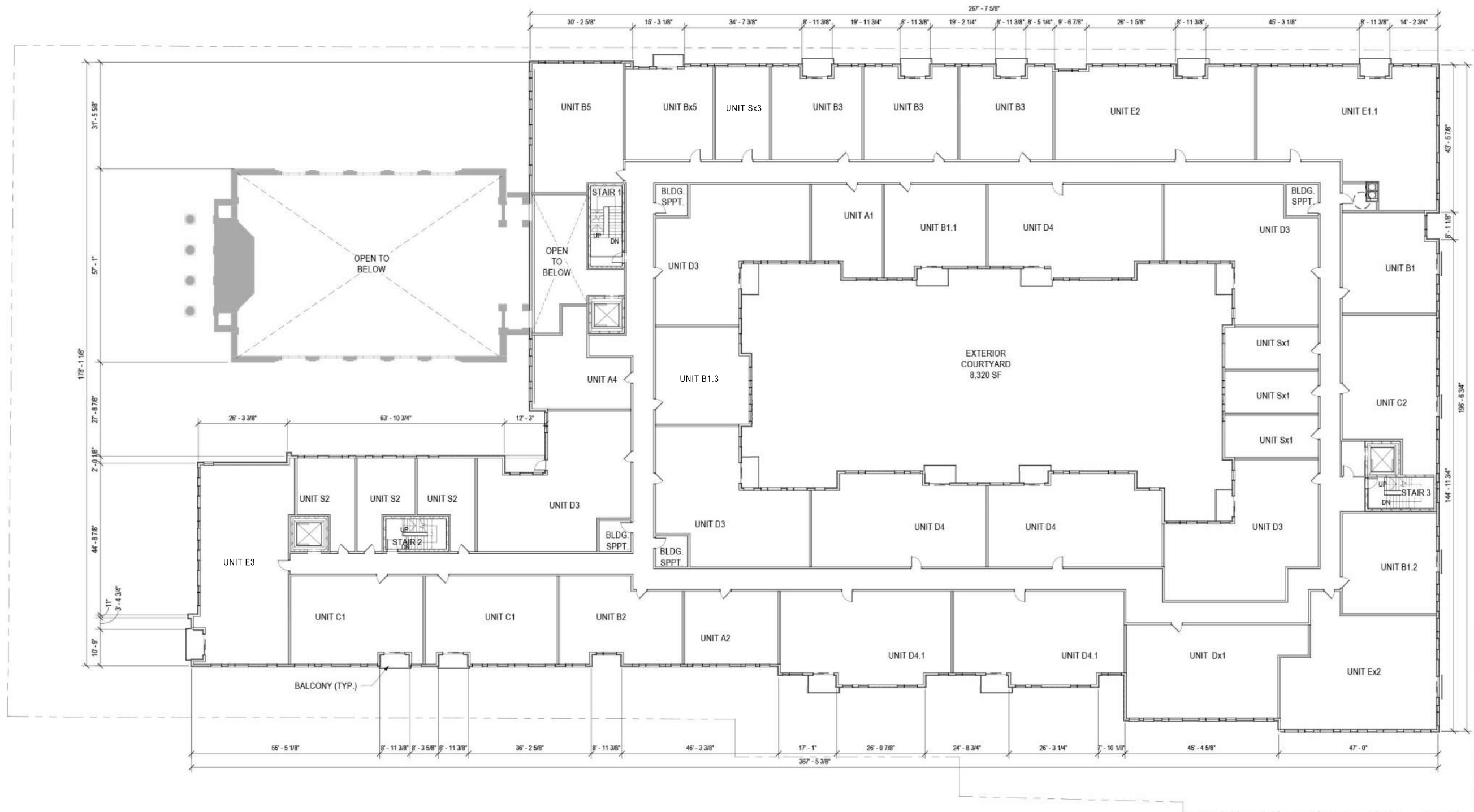
UNIVERSITY AVE

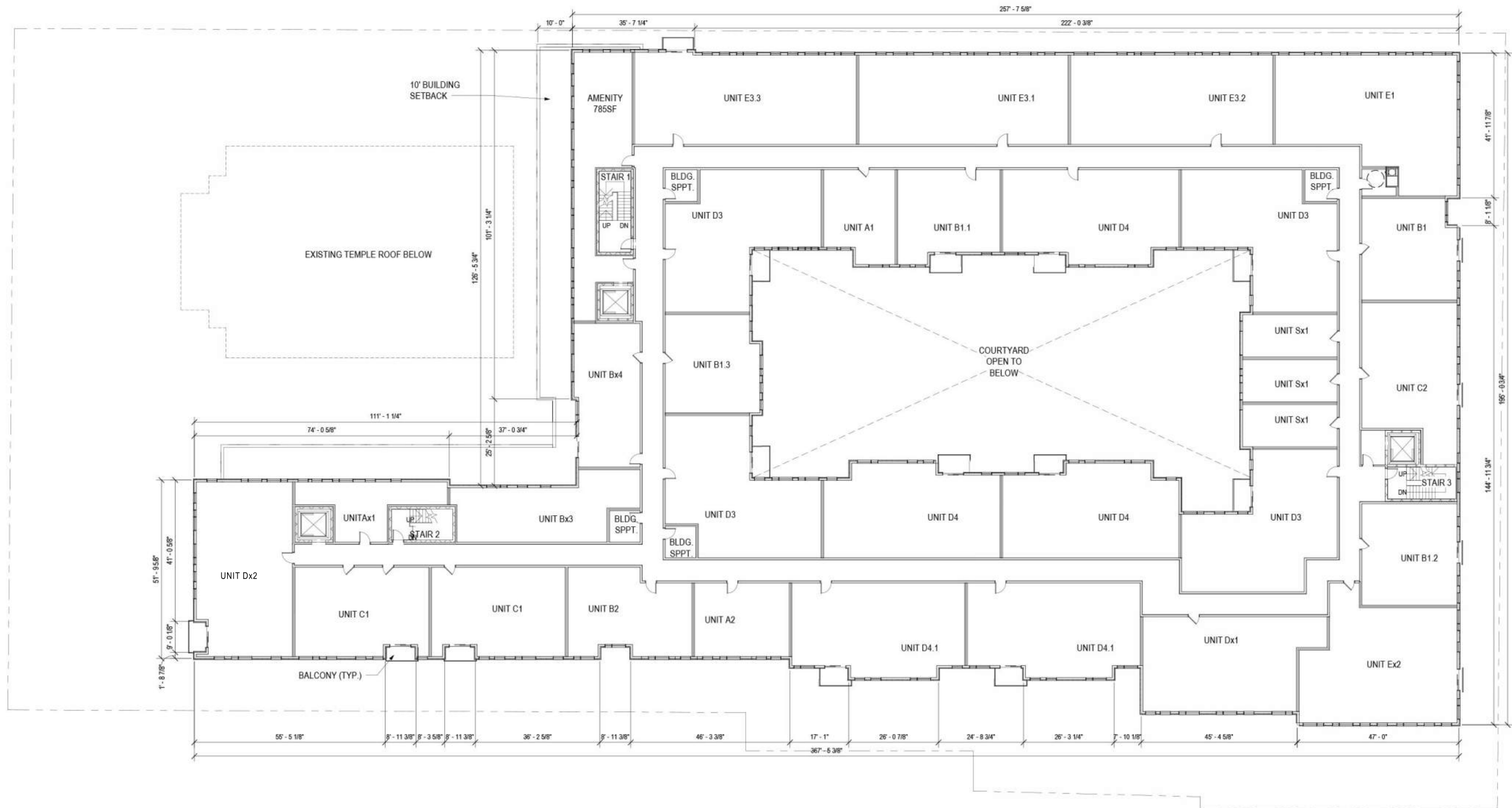
EXISTING CURB LINE MADISON STREET

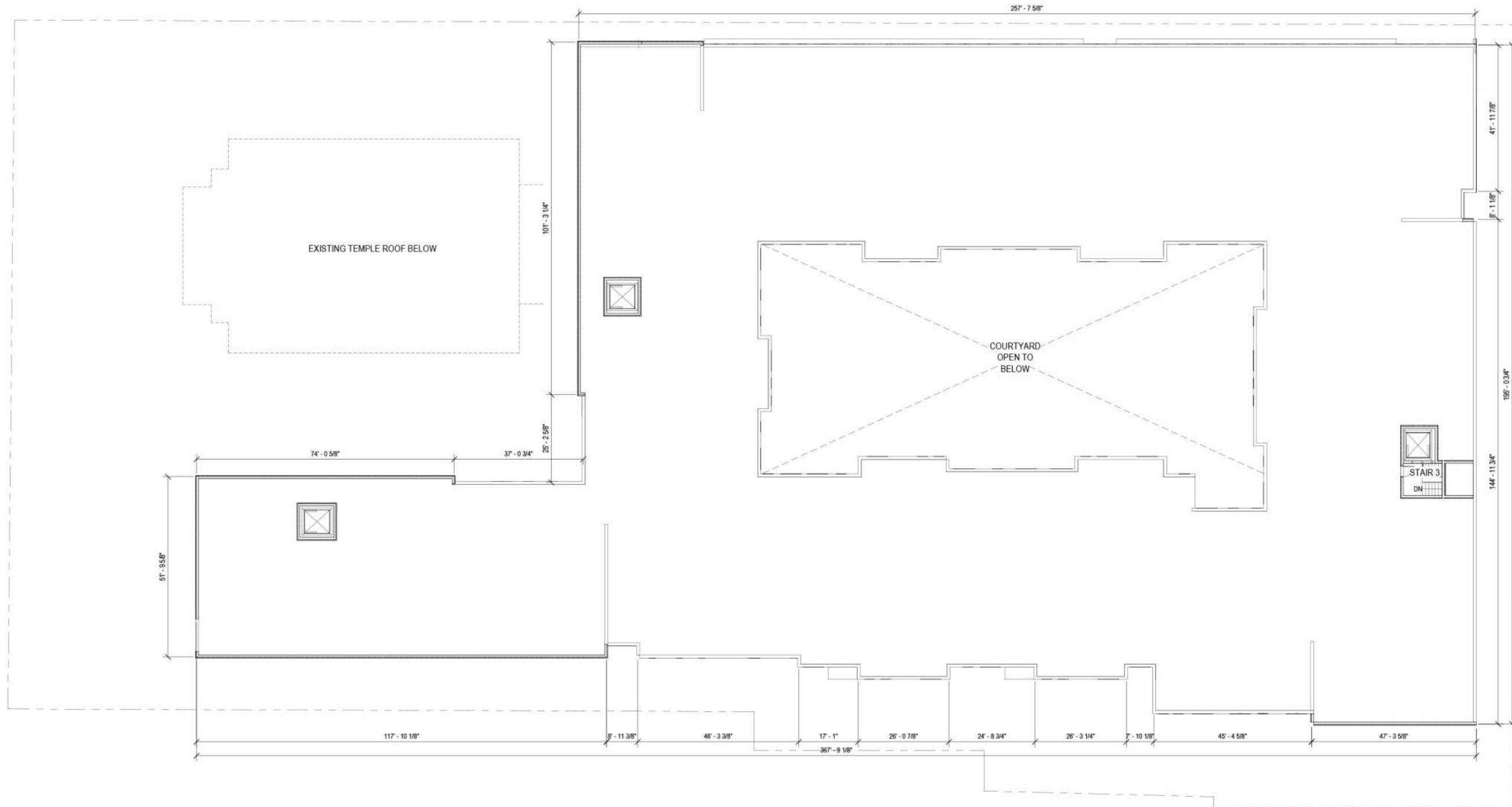
PROPERTY LINE











EXTERIOR BUILDING MATERIAL LEGEND

- | | |
|---|--|
| <ul style="list-style-type: none"> 1 NICHHA - VINTAGEWOOD SERIES - CEDAR 2 KINGSPAN - ACM PANEL - KYNAR PLATINUM MICA 3 KINGSPAN - ACM PANEL - KYNAR COSMIC GRAY MICA 4 KINGSPAN - ACM PANEL - KYNAR BONE WHITE 5 KINGSPAN - ACM PANEL - KYNAR AGED COPPER 6 JAMES HARDIE - HADRIE PANEL - LIGHT MIST 7 GLEN GERY - FACE BRICK - ANTIQUE WHITE 8 PELLA - IMPERVIA - FIBERGLASS WINDOW - BLACK (USED W/ MATERIALS 1; NOT IDENTIFIED ON ELEVATIONS) | <ul style="list-style-type: none"> 9 PELLA - IMPERVIA - FIBERGLASS WINDOW - MORNING SKY GRAY (USED W/ ALL MATERIALS EXCEPT 1; NOT IDENTIFIED ON ELEVATIONS) 10 KAWNEER - TRIFAB 401UT STOREFRONT - KYNAR COSMIC GRAY MICA 11 ALUMADECK - ALUMINUM RAILING SYSTEM - BLACK (NOT IDENTIFIED ON ELEVATIONS) 12 THRU-WALL EXHAUST VENT (AS SHOWN ON ELEVATIONS - ONE PER BATHROOM, KITCHEN, DRYER & HOT WATER HEATER FOR UNITS AND AS NEEDED FOR AMENITY SPACES) 13 COILING GARAGE DOOR 14 HOLLOW METAL DOOR FRAME 15 TPO ROOF - WHITE (NOT SHOWN) |
|---|--|



EXTERIOR BUILDING MATERIAL LEGEND

- | | |
|---|--|
| <ul style="list-style-type: none"> 1 NICHHA - VINTAGEWOOD SERIES - CEDAR 2 KINGSPAN - ACM PANEL - KYNAR PLATINUM MICA 3 KINGSPAN - ACM PANEL - KYNAR COSMIC GRAY MICA 4 KINGSPAN - ACM PANEL - KYNAR BONE WHITE 5 KINGSPAN - ACM PANEL - KYNAR AGED COPPER 6 JAMES HARDIE - HADRIE PANEL - LIGHT MIST 7 GLEN GERY - FACE BRICK - ANTIQUE WHITE 8 PELLA - IMPERVIA - FIBERGLASS WINDOW - BLACK (USED W/ MATERIALS 1; NOT IDENTIFIED ON ELEVATIONS) | <ul style="list-style-type: none"> 9 PELLA - IMPERVIA - FIBERGLASS WINDOW - MORNING SKY GRAY (USED W/ ALL MATERIALS EXCEPT 1; NOT IDENTIFIED ON ELEVATIONS) 10 KAWNEER - TRIFAB 401UT STOREFRONT - KYNAR COSMIC GRAY MICA 11 ALUMADECK - ALUMINUM RAILING SYSTEM - BLACK (NOT IDENTIFIED ON ELEVATIONS) 12 THRU-WALL EXHAUST VENT (AS SHOWN ON ELEVATIONS - ONE PER BATHROOM, KITCHEN, DRYER & HOT WATER HEATER FOR UNITS AND AS NEEDED FOR AMENITY SPACES) 13 COILING GARAGE DOOR 14 HOLLOW METAL DOOR FRAME 15 TPO ROOF - WHITE (NOT SHOWN) |
|---|--|



EXTERIOR BUILDING MATERIAL LEGEND

- | | |
|---|--|
| <ul style="list-style-type: none"> 1 NICHHA - VINTAGEWOOD SERIES - CEDAR 2 KINGSPAN - ACM PANEL - KYNAR PLATINUM MICA 3 KINGSPAN - ACM PANEL - KYNAR COSMIC GRAY MICA 4 KINGSPAN - ACM PANEL - KYNAR BONE WHITE 5 KINGSPAN - ACM PANEL - KYNAR AGED COPPER 6 JAMES HARDIE - HADRIE PANEL - LIGHT MIST 7 GLEN GERY - FACE BRICK - ANTIQUE WHITE 8 PELLA - IMPERVIA - FIBERGLASS WINDOW - BLACK (USED W/ MATERIALS 1; NOT IDENTIFIED ON ELEVATIONS) | <ul style="list-style-type: none"> 9 PELLA - IMPERVIA - FIBERGLASS WINDOW - MORNING SKY GRAY (USED W/ ALL MATERIALS EXCEPT 1; NOT IDENTIFIED ON ELEVATIONS) 10 KAWNEER - TRIFAB 401UT STOREFRONT - KYNAR COSMIC GRAY MICA 11 ALUMADECK - ALUMINUM RAILING SYSTEM - BLACK (NOT IDENTIFIED ON ELEVATIONS) 12 THRU-WALL EXHAUST VENT (AS SHOWN ON ELEVATIONS - ONE PER BATHROOM, KITCHEN, DRYER & HOT WATER HEATER FOR UNITS AND AS NEEDED FOR AMENITY SPACES) 13 COILING GARAGE DOOR 14 HOLLOW METAL DOOR FRAME 15 TPO ROOF - WHITE (NOT SHOWN) |
|---|--|



EXTERIOR BUILDING MATERIAL LEGEND

- | | |
|---|--|
| <ul style="list-style-type: none"> 1 NICHHA - VINTAGEWOOD SERIES - CEDAR 2 KINGSPAN - ACM PANEL - KYNAR PLATINUM MICA 3 KINGSPAN - ACM PANEL - KYNAR COSMIC GRAY MICA 4 KINGSPAN - ACM PANEL - KYNAR BONE WHITE 5 KINGSPAN - ACM PANEL - KYNAR AGED COPPER 6 JAMES HARDIE - HADRIE PANEL - LIGHT MIST 7 GLEN GERY - FACE BRICK - ANTIQUE WHITE 8 PELLA - IMPERVIA - FIBERGLASS WINDOW - BLACK (USED W/ MATERIALS 1; NOT IDENTIFIED ON ELEVATIONS) | <ul style="list-style-type: none"> 9 PELLA - IMPERVIA - FIBERGLASS WINDOW - MORNING SKY GRAY (USED W/ ALL MATERIALS EXCEPT 1; NOT IDENTIFIED ON ELEVATIONS) 10 KAWNEER - TRIFAB 401UT STOREFRONT - KYNAR COSMIC GRAY MICA 11 ALUMADECK - ALUMINUM RAILING SYSTEM - BLACK (NOT IDENTIFIED ON ELEVATIONS) 12 THRU-WALL EXHAUST VENT (AS SHOWN ON ELEVATIONS - ONE PER BATHROOM, KITCHEN, DRYER & HOT WATER HEATER FOR UNITS AND AS NEEDED FOR AMENITY SPACES) 13 COILING GARAGE DOOR 14 HOLLOW METAL DOOR FRAME 15 TPO ROOF - WHITE (NOT SHOWN) |
|---|--|

