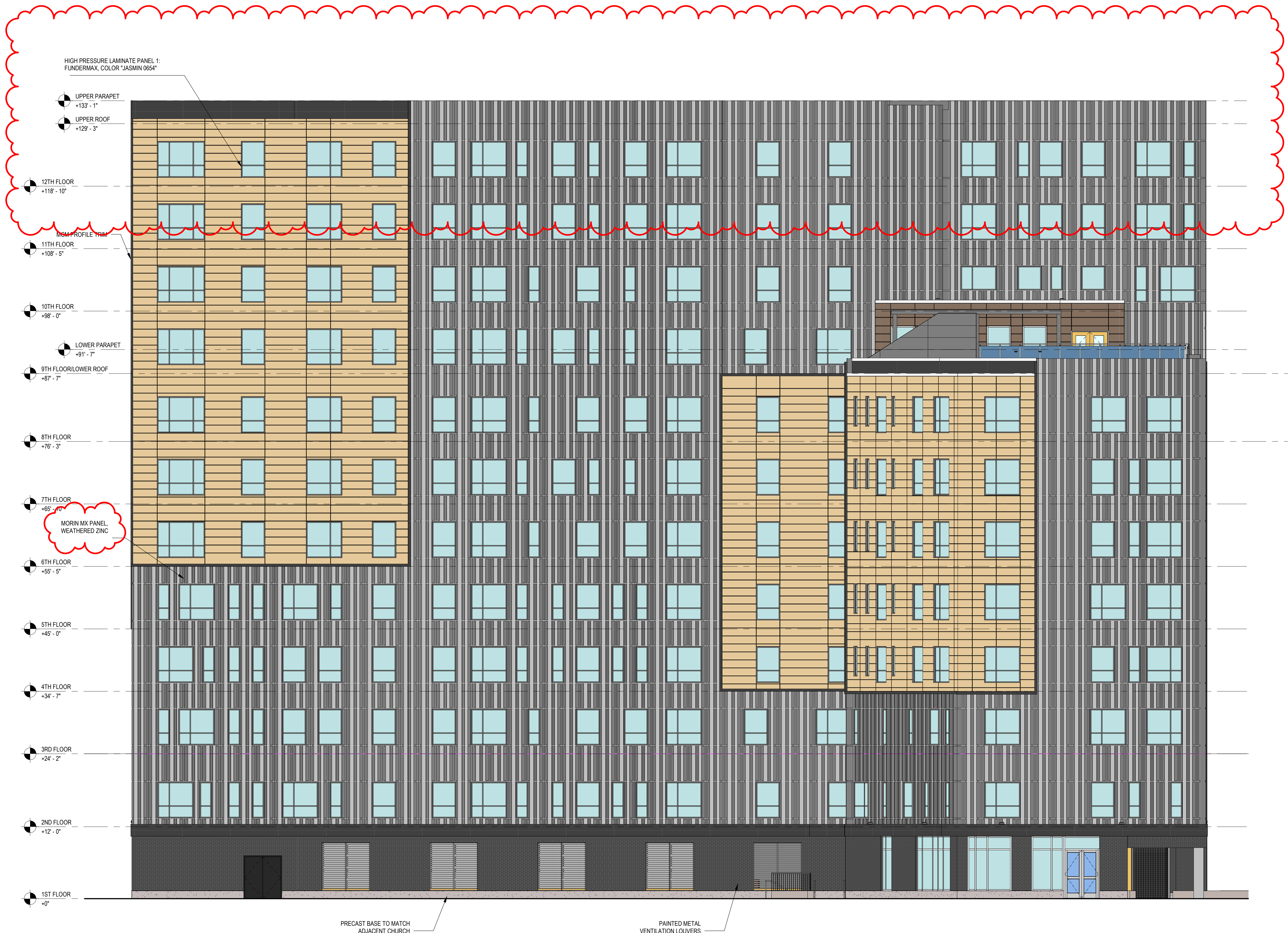


THESE DOCUMENTS WERE PREPARED UNDER THE DIRECT SUPERVISION OF A LICENSED ARCHITECT AND ARE OWNED BY AND REMAIN THE PROPERTY OF ASHLEY MCGRAW ARCHITECTS, P.C. THESE DOCUMENTS ARE NOT TO BE REPRODUCED, COPIED, REPRODUCED, OR TRANSMITTED IN ANY MANNER WITHOUT THE WRITTEN PERMISSION OF ASHLEY MCGRAW ARCHITECTS, P.C. IT IS A VIOLATION OF THE EDUCATION LAW OF THE STATE OF NEW YORK TO ALTER OR MODIFY THIS DOCUMENT IN ANY WAY UNLESS ACTING UNDER THE SUPERVISION OF A LICENSED ARCHITECT OR ENGINEER.

2/26/2023 2:43:59 PM

BNA 300/728 East Genesee/PLANNING COMMISSION - 728 E. Genesee.rvt



**A1** NEW MIXED-USE BUILDING - NORTH ELEVATION  
1/8" = 1'-0"



ASHLEY MCGRAW

125 EAST JEFFERSON STREET  
SYRACUSE, NEW YORK 13202

CONSULTANT:



728 EGSU LLC  
**728 EAST GENESEE STREET MIXED USE DEVELOPMENT**  
728 E. GENESEE ST., SYRACUSE, NY 13210

Rev. No.	Date	Desc.
1		
3	2/26/2023	CPC Update

AM JOB NO. 16054

**BUILDING ELEVATIONS - NORTH**

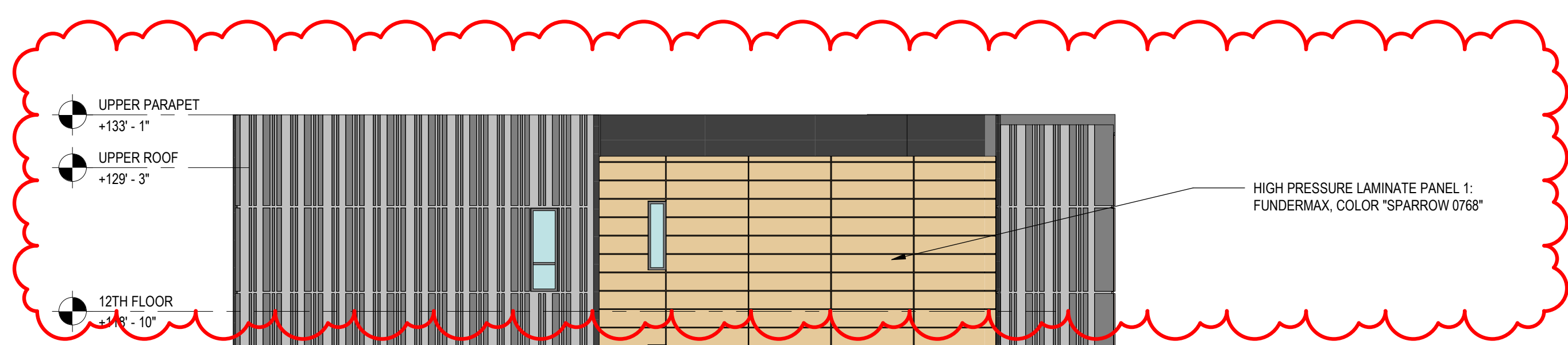
DATE ISSUED: 01/31/2022

**A200B**

THESE DOCUMENTS WERE PREPARED UNDER THE DIRECT SUPERVISION OF A LICENSED ARCHITECT AND ARE OWNED BY AND REMAIN THE PROPERTY OF ASHLEY MCGRAW ARCHITECTS, P.C. THESE DOCUMENTS ARE NOT TO BE REPRODUCED, COPIED, REPRODUCED, OR TRANSMITTED IN ANY MANNER WITHOUT THE WRITTEN CONSENT OF ASHLEY MCGRAW ARCHITECTS, P.C. IT IS A VIOLATION OF THE EDUCATION LAW OF THE STATE OF NEW YORK TO ALTER OR MODIFY THIS DOCUMENT IN ANY WAY UNLESS ACTING UNDER THE SUPERVISION OF A LICENSED ARCHITECT OR ENGINEER.

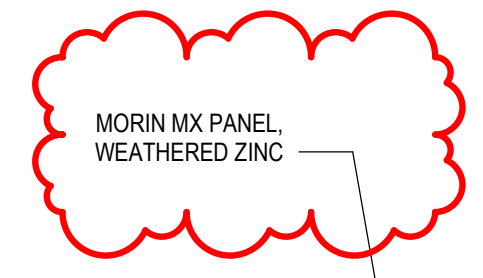
2/26/2023 2:44:54 PM

BA 300/728 East Genesee/PLANNING COMMISSION - 728 E. Genesee.rvt



- UPPER PARAPET  
+133' - 1"
- UPPER ROOF  
+129' - 3"
- 12TH FLOOR  
+118' - 10"
- 11TH FLOOR  
+108' - 5"
- 10TH FLOOR  
+98' - 0"
- LOWER PARAPET  
+91' - 7"
- 9TH FLOOR/LOWER ROOF  
+87' - 7"
- 8TH FLOOR  
+76' - 3"
- 7TH FLOOR  
+65' - 10"
- 6TH FLOOR  
+55' - 5"
- 5TH FLOOR  
+45' - 0"
- 4TH FLOOR  
+34' - 7"
- 3RD FLOOR  
+24' - 2"
- 2ND FLOOR  
+12' - 0"
- 1ST FLOOR  
+0"

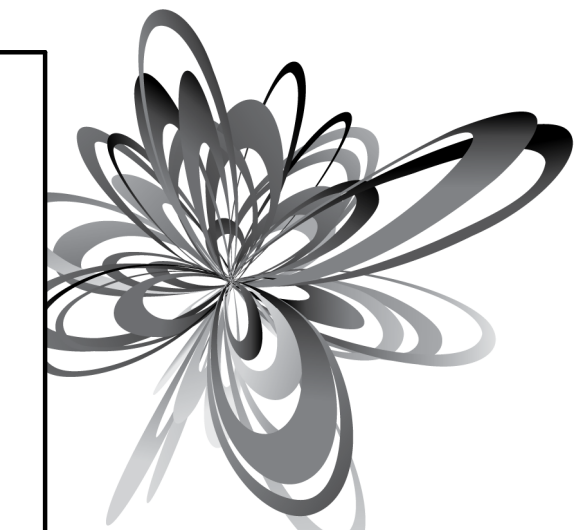
HIGH PRESSURE LAMINATE PANEL 1:  
FUNDERMAX, COLOR "SPARROW 0768"



MORIN MX PANEL,  
WEATHERED ZINC

CAST BASE TO MATCH  
ADJACENT CHURCH

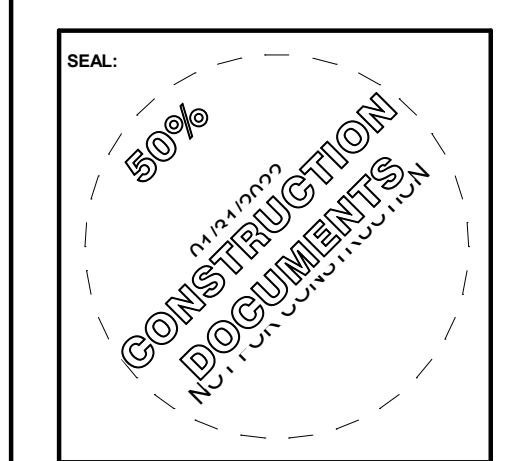
A1 NEW MIXED-USE BUILDING - EAST ELEVATION



ASHLEY MCGRAW

125 EAST JEFFERSON STREET  
SYRACUSE, NEW YORK 13202

CONSULTANT:



728 EGSU LLC  
**728 EAST GENESEE MIXED USE  
DEVELOPMENT**  
728 E. GENESEE ST., SYRACUSE, NY 13210

Rev. No.	Date	Desc.
1		
3	2/26/2023	CPC Update

AM JOB NO. 16054

**BUILDING  
ELEVATIONS -  
EAST**

DATE ISSUED:  
2/26/2023

**A201B**

THESE DOCUMENTS WERE PREPARED UNDER THE DIRECT SUPERVISION OF A LICENSED ARCHITECT AND ARE OWNED BY AND REMAIN THE PROPERTY OF ASHLEY MCGRAW ARCHITECTS, P.C. THESE DOCUMENTS ARE NOT TO BE REPRODUCED, COPIED, REPRODUCED, OR TRANSMITTED IN ANY FORM OR BY ANY MEANS, ELECTRONIC OR MECHANICAL, INCLUDING PHOTOCOPYING, RECORDING, OR BY ANY INFORMATION STORAGE AND RETRIEVAL SYSTEM, WITHOUT THE WRITTEN PERMISSION OF ASHLEY MCGRAW ARCHITECTS, P.C. IT IS A VIOLATION OF THE EDUCATION LAW OF THE STATE OF NEW YORK TO ALTER OR MODIFY THIS DOCUMENT IN ANY WAY UNLESS ACTING UNDER THE SUPERVISION OF A LICENSED ARCHITECT OR ENGINEER.

2/26/2023 2:44:09 PM

BA 300/728 East Genesee/PLANNING COMMISSION - 728 E. Genesee.rvt



- UPPER PARAPET  
+133' - 1"
- UPPER ROOF  
+129' - 3"
- 12TH FLOOR  
+18' - 10"
- 11TH FLOOR  
+108' - 5"
- 10TH FLOOR  
+98' - 0"
- 9TH FLOOR/LOWER ROOF  
+87' - 7"
- 8TH FLOOR  
+76' - 3"
- 7TH FLOOR  
+65' - 10"
- 6TH FLOOR  
+55' - 5"
- 5TH FLOOR  
+45' - 0"
- 4TH FLOOR  
+34' - 7"
- 3RD FLOOR  
+24' - 2"
- 2ND FLOOR  
+12' - 0"
- 1ST FLOOR  
+0"

MORIN MATRIX ALUMINUM PANEL  
COLOR: WEATHERED ZINC

HIGH PRESSURE LAMINATE PANEL 1:  
FUNDERMAX, COLOR "SPARROW 0768"

MCM PANEL TRIM

MCM ACCENT BAND

PAINTED METAL  
VENTILATION LOUVERS

CAST STONE BASE TO MATCH  
ADJACENT CHURCH

**A1** SOUTH EXTERIOR ELEVATION  
1/8" = 1'-0"



ASHLEY MCGRAW

125 EAST JEFFERSON STREET  
SYRACUSE, NEW YORK 13202

CONSULTANT:



728 EGSU LLC  
**728 EAST GENESEE MIXED-USE  
DEVELOPMENT**  
728 E. GENESEE ST., SYRACUSE, NY 13210

Rev. No.	Date	Desc.
1		
3	2/26/2023	CPC Update

AM JOB NO.  
**16054**

**BUILDING  
ELEVATIONS -  
SOUTH**

DATE ISSUED:  
**01/31/2022**

**A202B**

THESE DOCUMENTS WERE PREPARED UNDER THE DIRECT SUPERVISION OF A LICENSED ARCHITECT AND ARE OWNED BY AND REMAIN THE PROPERTY OF ASHLEY MCGRAW ARCHITECTS, P.C. THESE DOCUMENTS ARE NOT TO BE REPRODUCED, COPIED, REPRODUCED, OR TRANSMITTED IN ANY FORM OR BY ANY MEANS, ELECTRONIC OR MECHANICAL, INCLUDING PHOTOCOPYING, RECORDING, OR BY ANY INFORMATION STORAGE AND RETRIEVAL SYSTEM, WITHOUT THE WRITTEN PERMISSION OF ASHLEY MCGRAW ARCHITECTS, P.C. IT IS A VIOLATION OF THE EDUCATION LAW OF THE STATE OF NEW YORK TO ALTER OR MODIFY THIS DOCUMENT IN ANY WAY UNLESS ACTING UNDER THE SUPERVISION OF A LICENSED ARCHITECT OR ENGINEER.

2/26/2023 2:44:19 PM

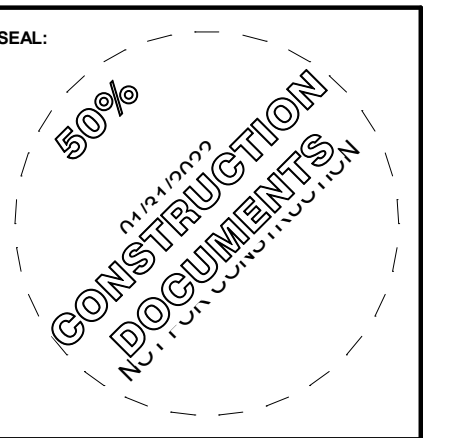
BNA 300/728 East Genesee PLANNING COMMISSION - 728 E. Genesee.rvt



ASHLEY MCGRAW

128 EAST JEFFERSON STREET  
SYRACUSE, NEW YORK 13202

CONSULTANT:



728 EGSU LLC  
**728 EAST GENESSEE MIXED USE DEVELOPMENT**  
728 E. GENESSEE ST., SYRACUSE, NY 13210

Rev. No.	Date	Desc.
1		
3	2/26/2023	CPC Update

AM JOB NO. **16054**

**BUILDING ELEVATIONS - WEST**

DATE ISSUED: **2/26/2023**

**A203B**



CLEAR ANODIZED ALUMINUM STOREFRONT

CAST STONE BASE TO MATCH ADJACENT CHURCH

PAINTED METAL VENTILATION LOUVERS

BELDEN BRICK, DARK GREY

60" HOLLAENDER VUE RAILING  
MORIN MATRIX ALUMINUM PANEL  
COLOR: WEATHERED ZINC

INSULATED METAL PANEL SYSTEM

- UPPER PARAPET -133' - 1'
- UPPER ROOF -129' - 3'
- 12TH FLOOR +118' - 10"
- 11TH FLOOR +108' - 5"
- 10TH FLOOR +96' - 0"
- LOWER PARAPET +91' - 7"
- 9TH FLOOR/LOWER ROOF +87' - 7"
- 8TH FLOOR +76' - 3"
- 7TH FLOOR +65' - 10"
- 6TH FLOOR +55' - 5"
- 5TH FLOOR +45' - 0"
- 4TH FLOOR +34' - 7"
- 3RD FLOOR +24' - 2"
- 2ND FLOOR +12' - 0"
- 1ST FLOOR +0'
- PARKING FLOOR -4' - 0"

**A1** NEW MIXED-USE BUILDING - WEST ELEVATION  
1/8" = 1'-0"

THESE DOCUMENTS WERE PREPARED UNDER THE DIRECT SUPERVISION OF A LICENSED ARCHITECT AND ARE OWNED BY AND REMAIN THE PROPERTY OF ASHLEY MCGRAW ARCHITECTS, P.C. THESE DOCUMENTS ARE NOT TO BE REPRODUCED, COPIED, REPRODUCED, OR TRANSMITTED IN ANY MANNER WITHOUT THE WRITTEN PERMISSION OF ASHLEY MCGRAW ARCHITECTS, P.C. IT IS A VIOLATION OF THE EDUCATION LAW OF THE STATE OF NEW YORK TO ALTER OR MODIFY THIS DOCUMENT IN ANY WAY UNLESS ACTING UNDER THE SUPERVISION OF A LICENSED ARCHITECT OR ENGINEER.

2/28/2023 2:44:19 PM

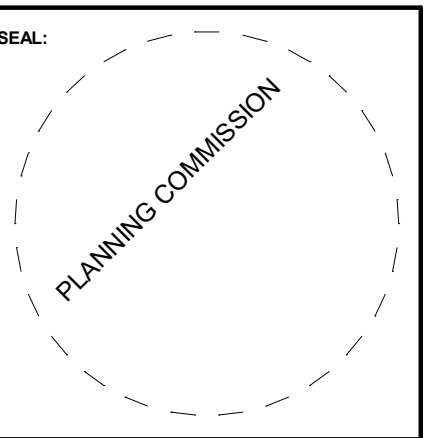
BM 300/728 East Genesee/PLANNING COMMISSION - 728 E Genesee.rvt



ASHLEY MCGRAW

125 EAST JEFFERSON STREET  
SYRACUSE, NEW YORK 13202

CONSULTANT:



728 EGSU LLC  
**EAST GENESEE MIXED USE  
DEVELOPMENT**  
728 E. GENESEE ST., SYRACUSE, NY 13210

Rev. No.	Date	Desc.

AM JOB NO. 16054

**EXTERIOR  
RENDERINGS**

DATE ISSUED: **PLANNING  
COMMISSION**

**R001**

THESE DOCUMENTS WERE PREPARED UNDER THE DIRECT SUPERVISION OF A LICENSED ARCHITECT AND ARE OWNED BY AND REMAIN THE PROPERTY OF ASHLEY MCGRAW ARCHITECTS, P.C. THESE DOCUMENTS ARE NOT TO BE REPRODUCED, COPIED, REPRODUCED, OR TRANSMITTED IN ANY MANNER WITHOUT THE WRITTEN PERMISSION OF ASHLEY MCGRAW ARCHITECTS, P.C. THIS IS IN VIOLATION OF THE EDUCATION LAW OF THE STATE OF NEW YORK TO ALTER OR MODIFY THIS DOCUMENT IN ANY WAY UNLESS ACTING UNDER THE SUPERVISION OF A LICENSED ARCHITECT OR ENGINEER.

2/26/2023 2:44:19 PM



BNA 300/728 East Genesee/PLANNING COMMISSION - 728 E. Genesee.rvt



ASHLEY MCGRAW

125 EAST JEFFERSON STREET  
SYRACUSE, NEW YORK 13202

CONSULTANT:



728 EGSU LLC  
**728 EAST GENESSEE MIXED USE  
DEVELOPMENT**  
728 E. GENESSEE ST., SYRACUSE, NY 13210

Rev. No.	Date	Desc.

AM JOB NO. 16054

**EXTERIOR  
RENDERINGS**

DATE ISSUED: 02/26/23

**R002**

THESE DOCUMENTS WERE PREPARED UNDER THE DIRECT SUPERVISION OF A LICENSED ARCHITECT AND ARE OWNED BY AND REMAIN THE PROPERTY OF ASHLEY MCGRAW ARCHITECTS, P.C. THESE DOCUMENTS ARE NOT TO BE REPRODUCED, COPIED, REPRODUCED, TRANSMITTED, OR OTHERWISE DISSEMINATED IN ANY MANNER WITHOUT THE WRITTEN PERMISSION OF ASHLEY MCGRAW ARCHITECTS, P.C. THIS IS A VULNERABLE DOCUMENT UNDER THE STATE OF NEW YORK TO ALTER OR MODIFY THIS DOCUMENT IN ANY WAY UNLESS ACTING UNDER THE AUTHORITY OF A LICENSED ARCHITECT OR ARCHITECTURAL FIRM.

2/26/2023 2:44:19 PM

BM 300/728 East Genesee/PLANNING COMMISSION - 728 E. Genesee.rvt



ASHLEY MCGRAW

125 EAST JEFFERSON STREET  
SYRACUSE, NEW YORK 13202

CONSULTANT:



728 EGSU LLC  
**728 EAST GENESSEE MIXED USE DEVELOPMENT**  
728 E. GENESSEE ST., SYRACUSE, NY 13210

Rev. No.	Date	Desc.

AM JOB NO. 16054

**EXTERIOR RENDERINGS**

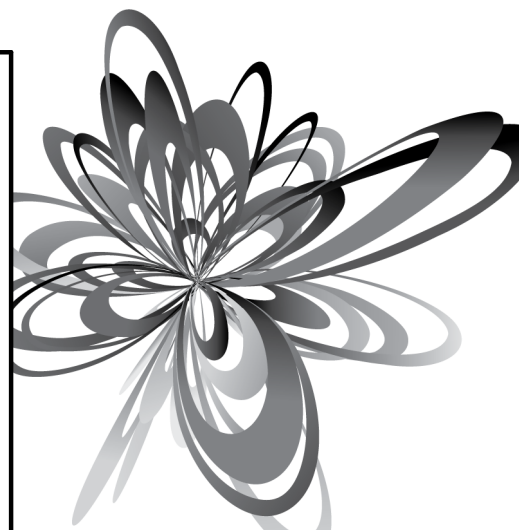
DATE ISSUED: 02/26/23

**R003**

THESE DOCUMENTS WERE PREPARED UNDER THE DIRECT SUPERVISION OF A LICENSED ARCHITECT AND ARE OWNED BY AND REMAIN THE PROPERTY OF ASHLEY MCGRAW ARCHITECTS, P.C. THESE DOCUMENTS ARE NOT TO BE REPRODUCED, COPIED, REPRODUCED, OR TRANSMITTED IN ANY MANNER WITHOUT THE WRITTEN CONSENT OF ASHLEY MCGRAW ARCHITECTS, P.C. THIS IS A CONDITION OF THE EDUCATION LAW OF THE STATE OF NEW YORK TO ALTER OR MODIFY THIS DOCUMENT IN ANY WAY UNLESS ACTING UNDER THE DIRECTIVE OF A LICENSED ARCHITECT OR ENGINEER.

2/26/2023 2:44:19 PM

BNA 300/728 East Genesee/PLANNING COMMISSION - 728 E Genesee.rvt



ASHLEY MCGRAW

125 EAST JEFFERSON STREET  
SYRACUSE, NEW YORK 13202

CONSULTANT:



728 EGSU LLC  
**728 EAST GENESSEE MIXED USE  
DEVELOPMENT**  
728 E. GENESSEE ST., SYRACUSE, NY 13210

Rev. No.	Date	Desc.

AM JOB NO. 16054

**EXTERIOR  
RENDERINGS**

DATE ISSUED: 02/26/23

**R004**



THESE DOCUMENTS WERE PREPARED UNDER THE DIRECT SUPERVISION OF A LICENSED ARCHITECT AND ARE OWNED BY AND REMAIN THE PROPERTY OF ASHLEY MCGRAW ARCHITECTS, P.C. THESE DOCUMENTS ARE NOT TO BE REPRODUCED, COPIED, REPRODUCED, TRANSMITTED, OR DISTRIBUTED IN ANY MANNER WITHOUT THE WRITTEN CONSENT OF ASHLEY MCGRAW ARCHITECTS, P.C. IT IS A VIOLATION OF THE EDUCATION LAW OF THE STATE OF NEW YORK TO ALTER OR MODIFY THIS DOCUMENT IN ANY WAY UNLESS ACTING UNDER THE SUPERVISION OF A LICENSED ARCHITECT OR ENGINEER.

2/26/2023 2:44:19 PM

BM 300/728 East Genesee PLANNING COMMISSION - 728 E. Genesee.rvt



ASHLEY MCGRAW

125 EAST JEFFERSON STREET  
SYRACUSE, NEW YORK 13202

CONSULTANT:



728 EGSU LLC  
**728 EAST GENESSEE MIXED USE  
DEVELOPMENT**  
728 E. GENESSEE ST., SYRACUSE, NY 13210

Rev. No.	Date	Desc.

AM JOB NO. 16054

**EXTERIOR  
RENDERINGS**

DATE ISSUED: 02/26/23

**R005**