

**Ordinance No.**

**2023**

**ORDINANCE DIRECTING PUBLIC HEARING  
RELATIVE TO THE DEPARTMENT OF PUBLIC  
WORKS PROPOSED ROLLOUT OF NEW  
SANITATION CARTS FOR CITY RESIDENTS**

BE IT ORDAINED, that pursuant to the Charter of the City of Syracuse--1960 and of any local law, act or acts amendatory thereof, this Common Council hereby fixes February 1, 2023, at 5:30 p.m. of that day as the time, for a public hearing to be held in the Common Council Chambers, Third Floor City Hall, 233 East Washington Street, Syracuse, New York 13202, in reference to the Department of Public Works proposed roll out of new standardized sanitation carts for city residents; and

BE IT FURTHER ORDAINED, that the City Clerk be and he hereby is directed to cause a copy of this ordinance to be published in the official newspapers of the City on or prior to January 26, 2023; and

BE IT FURTHER ORDAINED, that the public notice shall be in substance as follows:

NOTICE IS GIVEN that citizens attending the hearing have the right to provide written and oral comments. A description of the proposed plan is attached hereto as Exhibit "A".



**DEPARTMENT OF  
PUBLIC WORKS**  
CITY OF SYRACUSE

## **City of Syracuse Sanitation Cart Phased Rollout**

### **Program Goals**

- **Provide Better Service to Residents**
  - Improve reliability of trash pickup
  - Provide convenient, consistent and equitable collection to residents
  - Educate residents on what ordinance allows, disposing of excessive volumes and inappropriate materials
- **Create a Safer, Healthier Work Environment**
  - Sanitation leads City with 300 annual 'slip and falls' and 'strains' workers comp claims despite small size of staff (~4x the per employee claims as uniformed police)
  - The City predicts a sizeable drop in workers comp claims among other operations savings.
- **Invest in a Cleaner City**
  - Reduce litter
  - Non-standard containers and bagged waste without containers contribute to poor neighborhood conditions

### **What is Changing?**

- Residents will receive a cart which they will be required to use for the City to pick up their trash.
- Carts will be provided free of charge.
- Carts will be standard size and design used by other local and national municipalities.
- Elderly residents or those with disabilities can still request assistance from the Department of Public Works.
- For a small number of topographically constrained properties, carts will not be feasible.

### **When Will I Receive a Cart?**

- The rollout will happen in phases, with 20% of daily routes included in Phase I and the remainder of the city in Phase II.
- The City is taking a phased approach so it can monitor performance, communication to residents, operations and logistics in Phase 1 and make adjustments to ensure this is the best program possible when the carts roll out to entire city.
- Residents will receive notifications on what phase they are in, what to expect with the carts, how to use their cart once they get it, and resources to answer any further questions or concerns.

### **Additional Information**


- The program requires two primary ordinance changes:

- The first is that residents are required to use the sanitation cart in order to have their trash picked up.
- The second is to limit residential trash service to properties up to 3 units. Properties that are 4 units or more are considered commercial by the City of Syracuse and New York State; under this program, these commercial properties would arrange for their own trash removal in the same method as larger apartment complexes and other businesses.
- It is important the City meets current deadlines without any further delays so it can learn lessons from the first phase and expand to the entire city before next winter hits.

CITY OF SYRACUSE

# ROLLING OUT

A CITYWIDE TRANSITION TO SANITATION CARTS



PUBLIC WORKS COMMITTEE  
SYRACUSE COMMON COUNCIL


January 11<sup>th</sup>, 2023

1

1

## Agenda

1. Program Overview
2. Phase 1 Details
3. Ordinance Changes
4. Operational Savings



2

## Program Goals

- **Provide Better Service to Residents**
  - Improve reliability of trash pickup
  - Provide convenient, consistent and equitable collection to residents
  - Educate residents on what ordinance allows, disposing of excessive volumes and inappropriate materials
- **Create a Safer, Healthier Work Environment**
  - Sanitation leads City with 300 annual 'slip and falls' and 'strains' workers comp claims despite small size of staff
  - ~4x the per employee claims as uniformed police
- **Invest in a Cleaner City**
  - Reduce litter
  - Non-standard containers and bagged waste without containers contributes to poor neighborhood conditions

3

3

## Since October the City has...



Drafted City Ordinance Changes



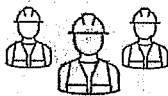
Cleaned Route and Address Data



Developed CityLine FAQ



Prepared for Fleet Conversions



Met with Crew Leaders to Select Routes



Confirmed Cart Distribution Logistics



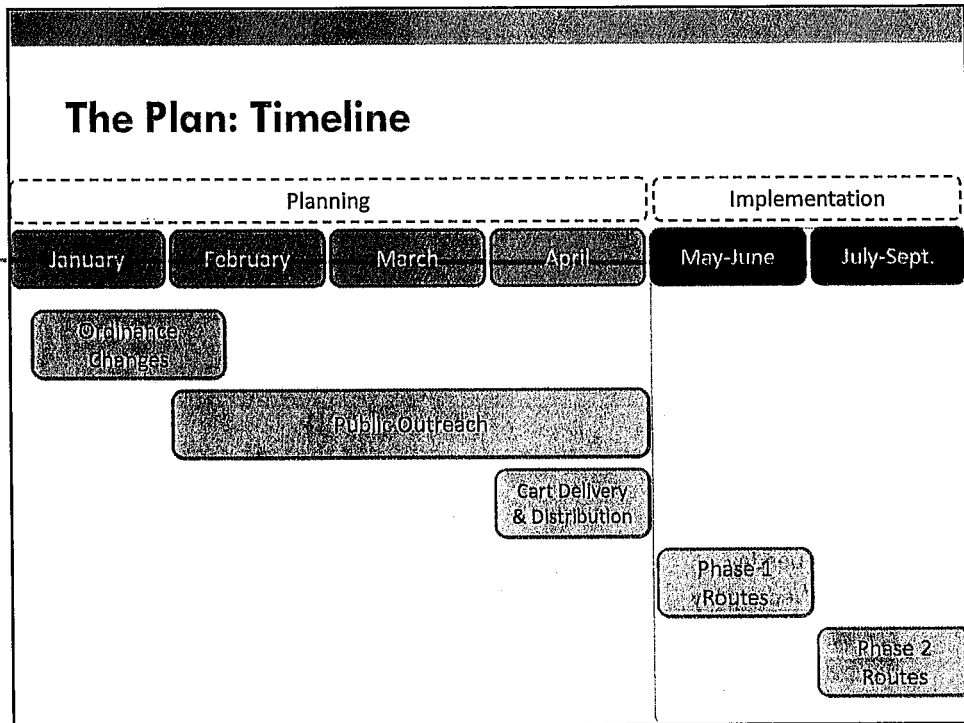
Developed Communications Plan



Quantified High-Level Operational Savings

4

4



5

## Phase 1: Resident Communications

- 1

**What is Changing?**

  - Press release and publicity announcing changes and Phase 1 routes
  - Project page on City website
  
- 2

**Get Ready for Your Cart**

  - Print mailers to Phase 1 residents – “What to expect”
  - TNT meetings to raise public awareness and answer questions
  
- 3

**Roll Out Your Cart**

  - Packet delivered with carts – “How to use your cart”
  - Update web project page with “How to Use” info
  - Print flyers for public spaces and community centers
  - TNT meetings after carts roll out to get feedback and answer FAQs
  - Equip Cityline, community ambassadors and TNTs with FAQs

6

6

## Phase 1: Proposed Routes

- 15 total
- 3 per day  
(1 per crew leader)
- Variety of neighborhoods

Monday
  Tuesday
  Wednesday
  Thursday
  Friday

7

## Phase 1: Monitoring and Learning

- **Performance**
  - Placement of Carts
  - Speed of Operations
  - Quality of Life - Reduction in Litter
  - Contamination (Recycling/Solid Waste)
  - Impact on Illegal Setouts
  - Public Safety and Worker Safety
- **Communication**
  - Was our outreach strategy successful?
  - What can we do better for citywide rollout?
- **Operations & Logistics**
  - How did this impact other operations (i.e. Cityline)?
  - What changes do we need to bulky pickup, etc.?

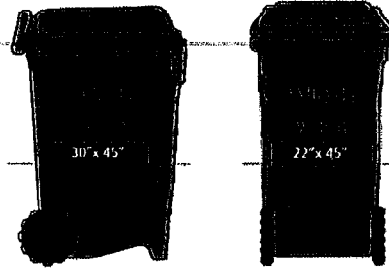
8

## Sanitation Ordinance Change #1

Residents will be required to use a standardized sanitation carts

### One size fits (almost) all

- Carts will be provided free of charge to residents
- Carts will be standard size and design used by local and national municipalities
- Elderly and disabled residents will still be able to request enhanced services
- A small number of topographically-constrained properties will not allow carts

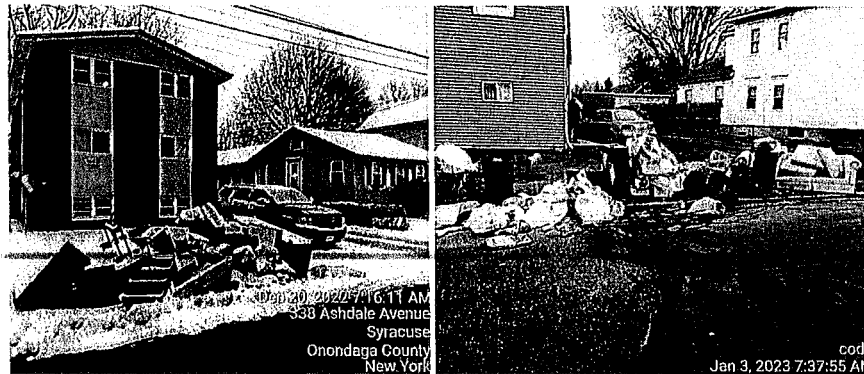


9

9

## Sanitation Ordinance Change #2

Commercial landlords of properties with 4-10 rental units no longer receive subsidized municipal trash pickup



10

10



## Comparisons to other Municipalities

Providing municipal trash pickup only to residential buildings as defined in the local tax code is consistent with Upstate peers and local suburbs

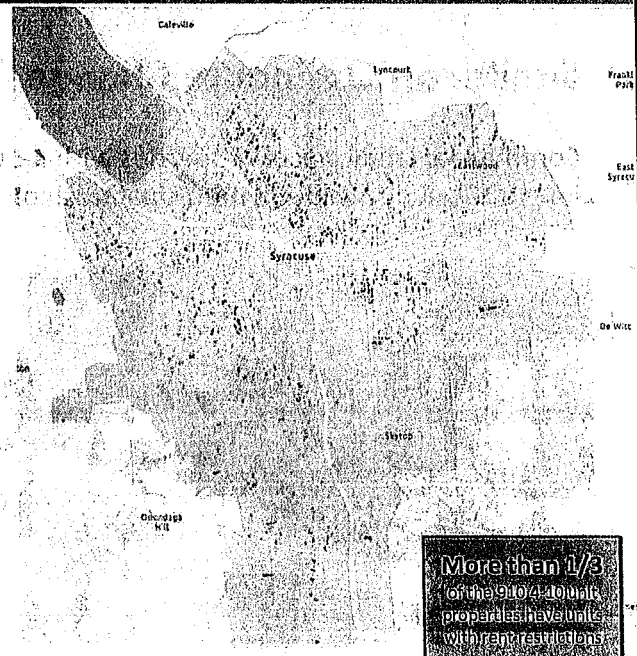
<b>Rochester</b> 3 units maximum	<b>Albany</b> 4 units maximum	<b>Buffalo</b> 4 units maximum
<b>Camillus</b> 4 units maximum	<b>Dewitt</b> 3 units maximum	<b>Geddes</b> 4 units maximum

11

11

## Characteristics of 4-10 Unit Properties

- 1 Represent 3% of all City residential parcels
- 2 Property class most likely to be owned by a non-City resident
- 3 Property class with the highest average number of code violations
- 4 Census tract household income is not significantly different than 3 units or > 10 units



12

## Operational Savings: Reduced disposal fees

Number of Units	Disposal Fees Per Building	Total Buildings	Disposal Fees
1	\$79.37	24,080	\$1,911,200
2	\$158.74	7,067	\$1,121,800
3	\$238.11	887	\$211,200
4	\$317.48	537	\$170,500
5	\$396.85	138	\$54,800
6	\$476.22	99	\$47,100
7	\$555.59	29	\$16,100
8	\$634.96	43	\$27,300
9	\$714.33	21	\$15,000
10	\$793.70	43	\$34,100
TOTAL CITY DISPOSAL FEES			\$3,609,000

**\$365,000**  
Anticipated Annual  
Cost Reduction  
to City

13

13

## Operational Savings: Workers Comp

Category	Low	High
Citywide Workers Comp Claims	\$4,000,000	\$4,500,000
Sanitation Workers Comp (~50% of Total)	\$2,000,000	\$2,250,000
Potential Reduction from Semi-Automated Pick up	52%	77%
<b>Potential Reduction in Workers Comp</b>	<b>\$1,040,000</b>	<b>\$1,732,500</b>

\*Source: SWANA – Solid Waste Association of North America, "Worker Safety in Solid Waste Collection"

14

14

# Operational Savings: Summary

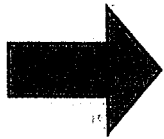
## One Time Expenses

## Annual Ongoing Savings

**\$2.5M**  
Cart Acquisition

+

**\$0.1M**  
Equipment Modifications



**\$1.4-2.1M**  
reduced tipping fees &  
workers comp savings

CITY OF SYRACUSE

# Questions?



## THANK YOU

PUBLIC WORKS COMMITTEE  
SYRACUSE COMMON COUNCIL

January 11<sup>th</sup>, 2023