

# SYRACUSE CREEKWALK PHASE III

Public Information Meeting

Series 1



# INTRODUCTIONS

- ▶ Project Manager – Russell Houck, City of Syracuse
  - ▶ 315-448-8059 | [rhouck@syr.gov](mailto:rhouck@syr.gov)
- ▶ Design Consultant – Chuck Stanton & Doug Stansbury, C&S Engineers, Inc.
  - ▶ 315-455-2000 | [cfstanton@cscos.com](mailto:cfstanton@cscos.com) | [dstansbury@cscos.com](mailto:dstansbury@cscos.com)



# Project Overview

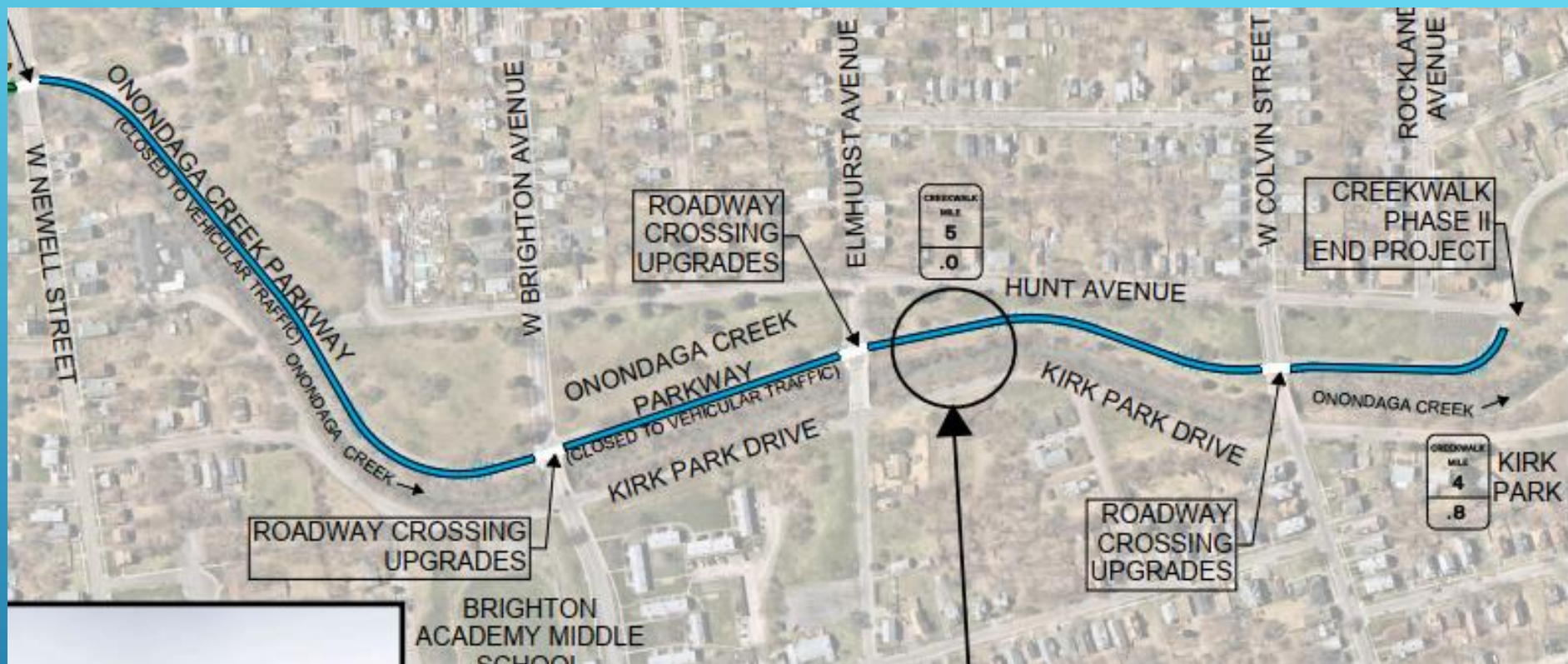
- ▶ Starting initial conceptual routing for 3 miles of new trail – Kirk Park to Dorwin Ave – Creek corridor trail recommended by community's Onondaga Creek Revitalization Plan
- ▶ Public and Stakeholder meetings – need input!
- ▶ Connections to neighborhoods
- ▶ Improve Creek access – canoeing/fishing
- ▶ Increase tree cover on top of bank
- ▶ Assessing ROW needed for trail (limited)
- ▶ Community Advisory Group – Interested?
- ▶ Need your input and ideas – what is desired?



# SCHEDULE & BUDGET

- ▶ **Public Input/Design/Environmental and Cultural Investigations 2025/2026**
- ▶ **Design Approval – Summer 2026**
- ▶ **Funding 80% Federal/20% City of Syracuse**
- ▶ **Construction Sections 1 & 2 - Kirk Park to Ballantyne Road  
Anticipated 2028 start; Budget \$2.6 million**
- ▶ **Construction Sections 3 through 6 - Ballantyne Road to Dorwin  
Avenue anticipated 2030 start ; Budget \$10.2 million**



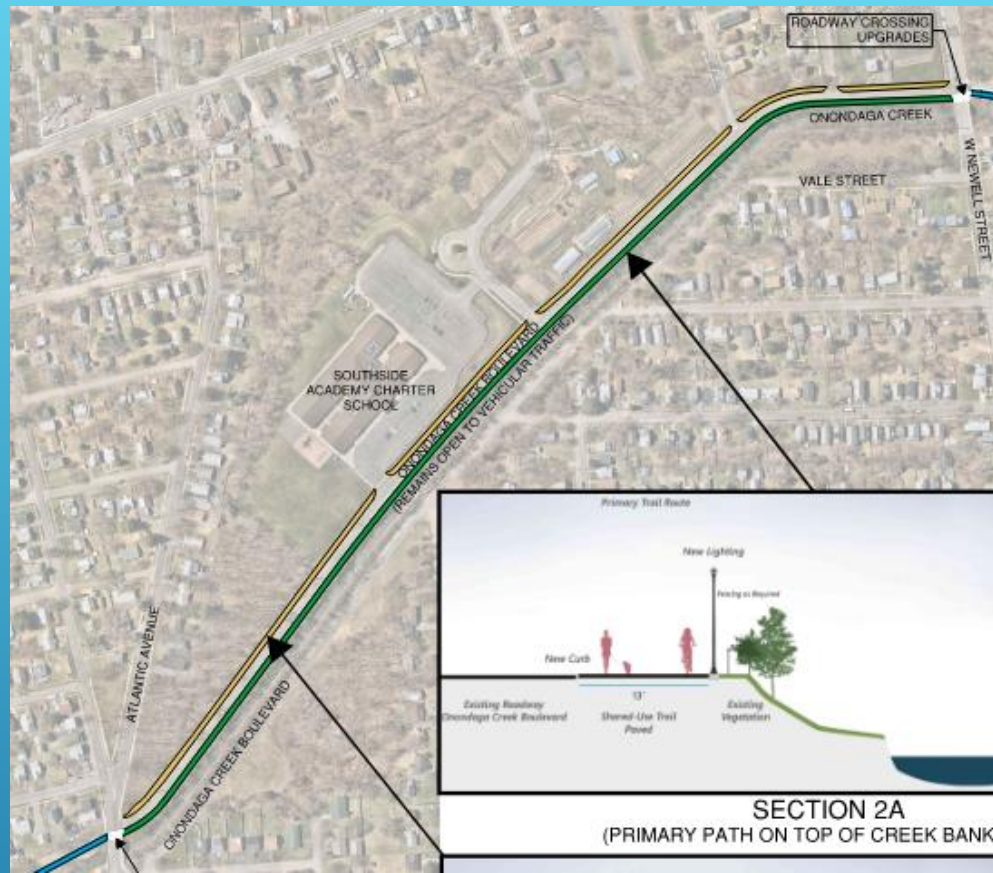


## Section 1 - Newell St. to Kirk Park

- Transform roadway to trail
- Safer Road Crossings
- Potential Parks Dept. Greenspace Enhancement



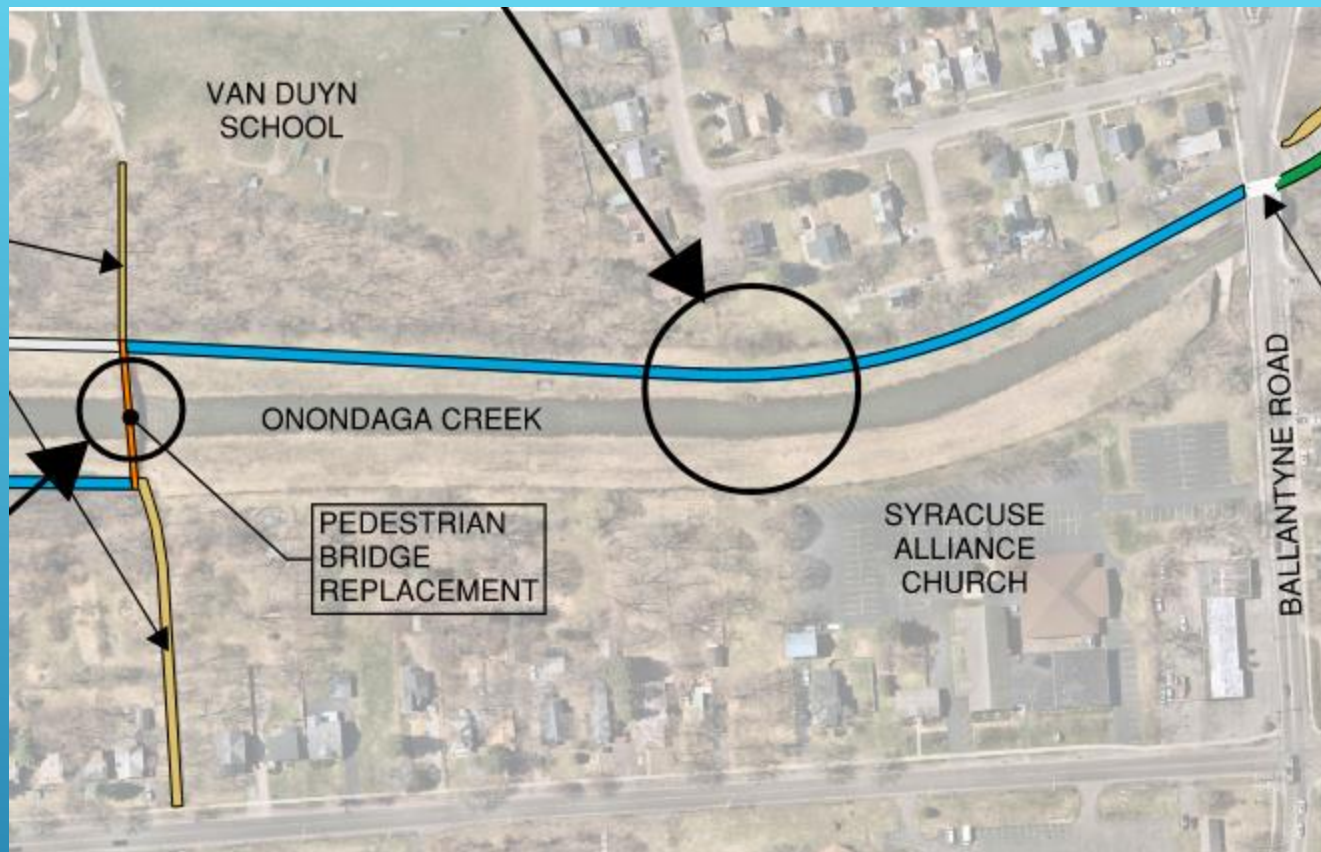




## Section 2 – Ballantyne Rd. to Newell St.

- Shared path on sidewalk or Creekside
- Potential clearing of brush along creek
- Possible parking areas near Ballantyne/Atlantic

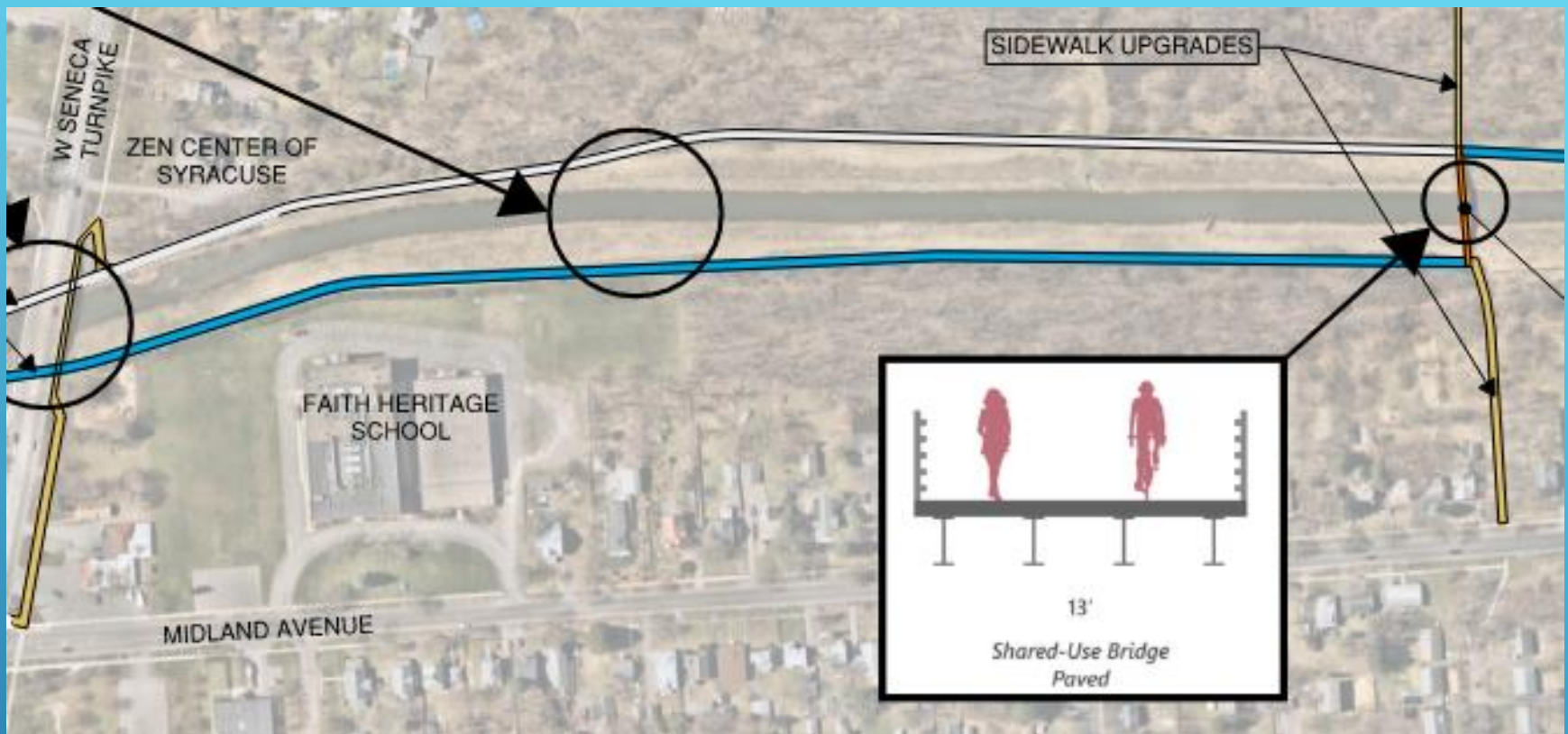




## Section 3 – Van Duyn Bridge to Ballantyne Rd.

- Improve Midland/Van Duyn access points
- Minor ROW needed



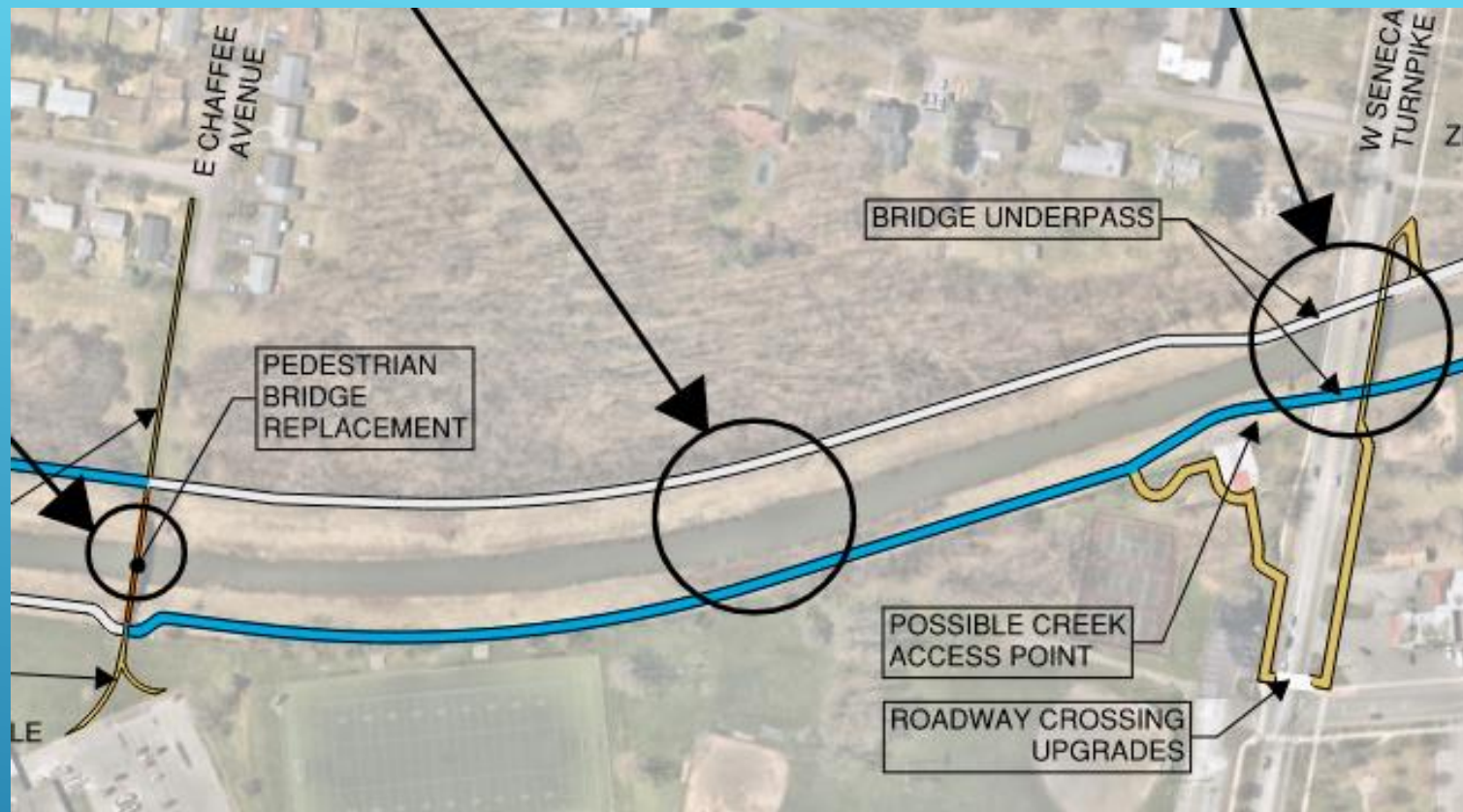


## Section 4 – Seneca Turnpike to Van Duyn Bridge

- Proposed full pedestrian bridge replacement
- Determine which side of Creek is best
- ROW needed for trail







## Section 5 – Meachem Bridge to Seneca Turnpike

- Bridge underpass vs Meachem Park/Midland loop
- Enhance Creek Access/Canoe launch
- Proposed full pedestrian bridge replacement
- Improve community/access points





## Section 6 – Dorwin Ave. to Meachem Bridge

- Potential creek access/canoe launch
- Parking lot upgrades at Kelly Park Drive
- Fencing vs boulders and trees in key areas



# Your Questions?

Maps on Tables to  
Review with Designers  
and Leave Comments

Thank You!

