

**SYRACUSE STEAM SCHOOL
SYRACUSE LANDMARK
PRESERVATION BOARD
PRESENTATION**

November 2, 2023 at 8:30AM
Common Council Chambers
(3rd floor of City Hall, 233 E. Washington Street)



LaBella

Powered by partnership.



- 1 Our Team
- 2 Process and Approvals
- 3 Exterior Scope
- 4 Interior Scope
- 5 Questions



Process and Approvals

- Process
- Historic Evaluation of the Building
 - Window Evaluation
 - Masonry Testing / Building Envelope
 - Paint Color Testing
- Onondaga County
- NYSED Facilities
- SHPO



**EXTERIOR
SCOPE**

SYRACUSE STEAM SCHOOL - RENOVATIONS

717 SOUTH WARREN STREET, SYRACUSE, NY



SED REVIEW / PERMIT
SEPTEMBER 11, 2023



300 STATE STREET SUITE 201
ROCHESTER, NY 14614
585-424-8372
www.labellapc.com

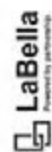


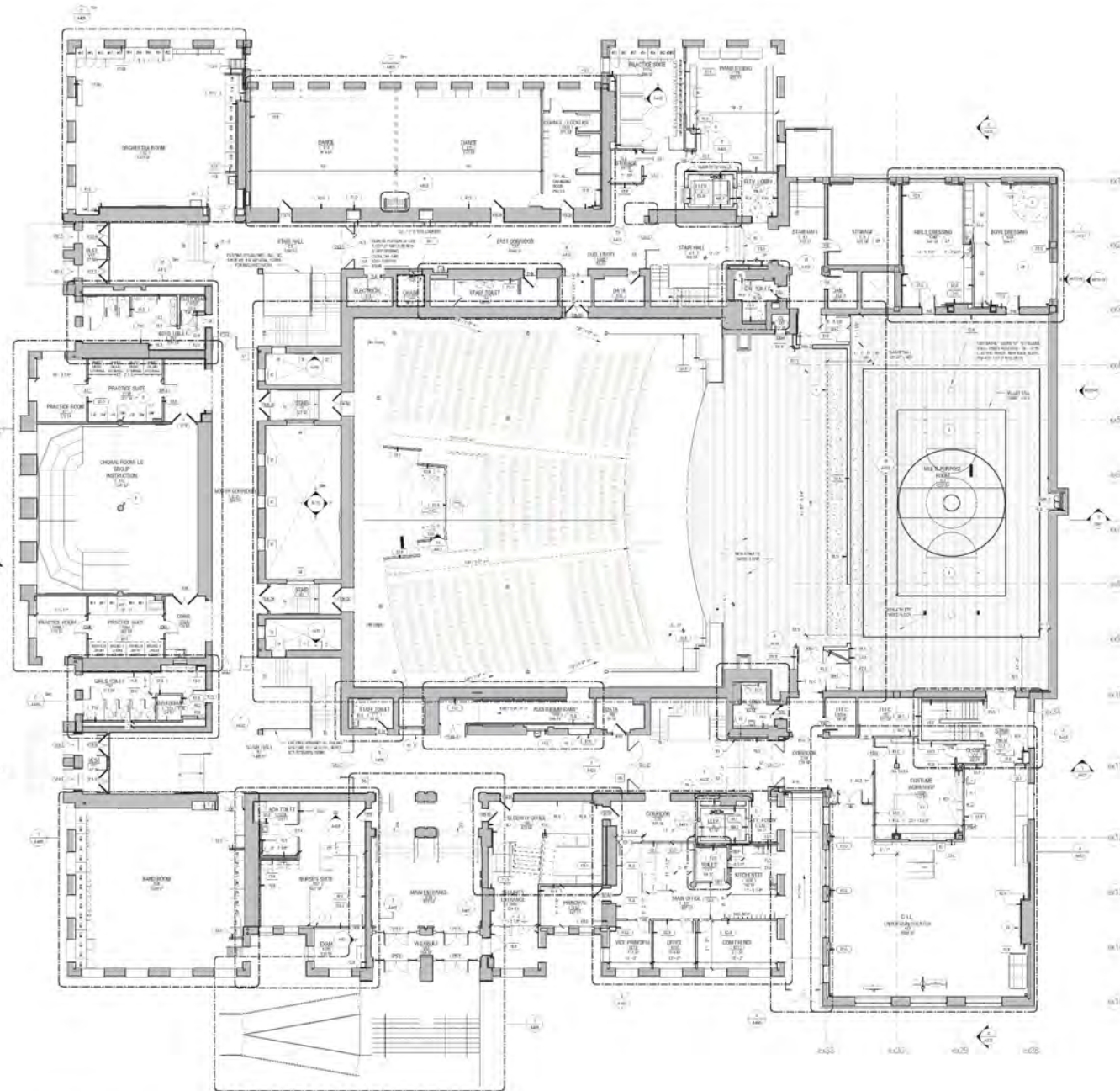
LBA PROJECT NO. 222307

| NO. | DESCRIPTION | DATE | BY | CHECKED |
|-----|---------------|----------|----|---------|
| 1 | PROJECT START | 09/11/23 | JL | ML |
| 2 | PROJECT STOP | 09/11/23 | JL | ML |
| 3 | PROJECT START | 09/11/23 | JL | ML |
| 4 | PROJECT STOP | 09/11/23 | JL | ML |
| 5 | PROJECT START | 09/11/23 | JL | ML |
| 6 | PROJECT STOP | 09/11/23 | JL | ML |
| 7 | PROJECT START | 09/11/23 | JL | ML |
| 8 | PROJECT STOP | 09/11/23 | JL | ML |
| 9 | PROJECT START | 09/11/23 | JL | ML |
| 10 | PROJECT STOP | 09/11/23 | JL | ML |
| 11 | PROJECT START | 09/11/23 | JL | ML |
| 12 | PROJECT STOP | 09/11/23 | JL | ML |
| 13 | PROJECT START | 09/11/23 | JL | ML |
| 14 | PROJECT STOP | 09/11/23 | JL | ML |
| 15 | PROJECT START | 09/11/23 | JL | ML |
| 16 | PROJECT STOP | 09/11/23 | JL | ML |
| 17 | PROJECT START | 09/11/23 | JL | ML |
| 18 | PROJECT STOP | 09/11/23 | JL | ML |
| 19 | PROJECT START | 09/11/23 | JL | ML |
| 20 | PROJECT STOP | 09/11/23 | JL | ML |
| 21 | PROJECT START | 09/11/23 | JL | ML |
| 22 | PROJECT STOP | 09/11/23 | JL | ML |
| 23 | PROJECT START | 09/11/23 | JL | ML |
| 24 | PROJECT STOP | 09/11/23 | JL | ML |
| 25 | PROJECT START | 09/11/23 | JL | ML |
| 26 | PROJECT STOP | 09/11/23 | JL | ML |
| 27 | PROJECT START | 09/11/23 | JL | ML |
| 28 | PROJECT STOP | 09/11/23 | JL | ML |
| 29 | PROJECT START | 09/11/23 | JL | ML |
| 30 | PROJECT STOP | 09/11/23 | JL | ML |
| 31 | PROJECT START | 09/11/23 | JL | ML |
| 32 | PROJECT STOP | 09/11/23 | JL | ML |
| 33 | PROJECT START | 09/11/23 | JL | ML |
| 34 | PROJECT STOP | 09/11/23 | JL | ML |
| 35 | PROJECT START | 09/11/23 | JL | ML |
| 36 | PROJECT STOP | 09/11/23 | JL | ML |
| 37 | PROJECT START | 09/11/23 | JL | ML |
| 38 | PROJECT STOP | 09/11/23 | JL | ML |
| 39 | PROJECT START | 09/11/23 | JL | ML |
| 40 | PROJECT STOP | 09/11/23 | JL | ML |
| 41 | PROJECT START | 09/11/23 | JL | ML |
| 42 | PROJECT STOP | 09/11/23 | JL | ML |
| 43 | PROJECT START | 09/11/23 | JL | ML |
| 44 | PROJECT STOP | 09/11/23 | JL | ML |
| 45 | PROJECT START | 09/11/23 | JL | ML |
| 46 | PROJECT STOP | 09/11/23 | JL | ML |
| 47 | PROJECT START | 09/11/23 | JL | ML |
| 48 | PROJECT STOP | 09/11/23 | JL | ML |
| 49 | PROJECT START | 09/11/23 | JL | ML |
| 50 | PROJECT STOP | 09/11/23 | JL | ML |
| 51 | PROJECT START | 09/11/23 | JL | ML |
| 52 | PROJECT STOP | 09/11/23 | JL | ML |
| 53 | PROJECT START | 09/11/23 | JL | ML |
| 54 | PROJECT STOP | 09/11/23 | JL | ML |
| 55 | PROJECT START | 09/11/23 | JL | ML |
| 56 | PROJECT STOP | 09/11/23 | JL | ML |
| 57 | PROJECT START | 09/11/23 | JL | ML |
| 58 | PROJECT STOP | 09/11/23 | JL | ML |
| 59 | PROJECT START | 09/11/23 | JL | ML |
| 60 | PROJECT STOP | 09/11/23 | JL | ML |
| 61 | PROJECT START | 09/11/23 | JL | ML |
| 62 | PROJECT STOP | 09/11/23 | JL | ML |
| 63 | PROJECT START | 09/11/23 | JL | ML |
| 64 | PROJECT STOP | 09/11/23 | JL | ML |
| 65 | PROJECT START | 09/11/23 | JL | ML |
| 66 | PROJECT STOP | 09/11/23 | JL | ML |
| 67 | PROJECT START | 09/11/23 | JL | ML |
| 68 | PROJECT STOP | 09/11/23 | JL | ML |
| 69 | PROJECT START | 09/11/23 | JL | ML |
| 70 | PROJECT STOP | 09/11/23 | JL | ML |
| 71 | PROJECT START | 09/11/23 | JL | ML |
| 72 | PROJECT STOP | 09/11/23 | JL | ML |
| 73 | PROJECT START | 09/11/23 | JL | ML |
| 74 | PROJECT STOP | 09/11/23 | JL | ML |
| 75 | PROJECT START | 09/11/23 | JL | ML |
| 76 | PROJECT STOP | 09/11/23 | JL | ML |
| 77 | PROJECT START | 09/11/23 | JL | ML |
| 78 | PROJECT STOP | 09/11/23 | JL | ML |
| 79 | PROJECT START | 09/11/23 | JL | ML |
| 80 | PROJECT STOP | 09/11/23 | JL | ML |
| 81 | PROJECT START | 09/11/23 | JL | ML |
| 82 | PROJECT STOP | 09/11/23 | JL | ML |
| 83 | PROJECT START | 09/11/23 | JL | ML |
| 84 | PROJECT STOP | 09/11/23 | JL | ML |
| 85 | PROJECT START | 09/11/23 | JL | ML |
| 86 | PROJECT STOP | 09/11/23 | JL | ML |
| 87 | PROJECT START | 09/11/23 | JL | ML |
| 88 | PROJECT STOP | 09/11/23 | JL | ML |
| 89 | PROJECT START | 09/11/23 | JL | ML |
| 90 | PROJECT STOP | 09/11/23 | JL | ML |
| 91 | PROJECT START | 09/11/23 | JL | ML |
| 92 | PROJECT STOP | 09/11/23 | JL | ML |
| 93 | PROJECT START | 09/11/23 | JL | ML |
| 94 | PROJECT STOP | 09/11/23 | JL | ML |
| 95 | PROJECT START | 09/11/23 | JL | ML |
| 96 | PROJECT STOP | 09/11/23 | JL | ML |
| 97 | PROJECT START | 09/11/23 | JL | ML |
| 98 | PROJECT STOP | 09/11/23 | JL | ML |
| 99 | PROJECT START | 09/11/23 | JL | ML |
| 100 | PROJECT STOP | 09/11/23 | JL | ML |

CLIENT: SYRACUSE CITY SCHOOLS, DISTRICT PROJECT: STEAM SCHOOL
PROJECT # 222307
ISSUE DATE: SEPTEMBER 11, 2023

PROJECT NAME: SYRACUSE STEAM SCHOOL
PROJECT ADDRESS: 717 SOUTH WARREN STREET, SYRACUSE, NY





FIRST FLOOR PLAN
 PART 1 SCALE 1/8" = 1'-0"

GENERAL PLAN NOTES

1. ALL WORK SHALL BE IN ACCORDANCE WITH THE SYRACUSE CITY SCHOOL DISTRICT SPECIFICATIONS AND THE SYRACUSE CITY SCHOOL DISTRICT DESIGN MANUAL.
2. ALL WORK SHALL BE IN ACCORDANCE WITH THE SYRACUSE CITY SCHOOL DISTRICT DESIGN MANUAL AND THE SYRACUSE CITY SCHOOL DISTRICT SPECIFICATIONS.
3. ALL WORK SHALL BE IN ACCORDANCE WITH THE SYRACUSE CITY SCHOOL DISTRICT DESIGN MANUAL AND THE SYRACUSE CITY SCHOOL DISTRICT SPECIFICATIONS.
4. ALL WORK SHALL BE IN ACCORDANCE WITH THE SYRACUSE CITY SCHOOL DISTRICT DESIGN MANUAL AND THE SYRACUSE CITY SCHOOL DISTRICT SPECIFICATIONS.
5. ALL WORK SHALL BE IN ACCORDANCE WITH THE SYRACUSE CITY SCHOOL DISTRICT DESIGN MANUAL AND THE SYRACUSE CITY SCHOOL DISTRICT SPECIFICATIONS.
6. ALL WORK SHALL BE IN ACCORDANCE WITH THE SYRACUSE CITY SCHOOL DISTRICT DESIGN MANUAL AND THE SYRACUSE CITY SCHOOL DISTRICT SPECIFICATIONS.
7. ALL WORK SHALL BE IN ACCORDANCE WITH THE SYRACUSE CITY SCHOOL DISTRICT DESIGN MANUAL AND THE SYRACUSE CITY SCHOOL DISTRICT SPECIFICATIONS.
8. ALL WORK SHALL BE IN ACCORDANCE WITH THE SYRACUSE CITY SCHOOL DISTRICT DESIGN MANUAL AND THE SYRACUSE CITY SCHOOL DISTRICT SPECIFICATIONS.
9. ALL WORK SHALL BE IN ACCORDANCE WITH THE SYRACUSE CITY SCHOOL DISTRICT DESIGN MANUAL AND THE SYRACUSE CITY SCHOOL DISTRICT SPECIFICATIONS.
10. ALL WORK SHALL BE IN ACCORDANCE WITH THE SYRACUSE CITY SCHOOL DISTRICT DESIGN MANUAL AND THE SYRACUSE CITY SCHOOL DISTRICT SPECIFICATIONS.
11. ALL WORK SHALL BE IN ACCORDANCE WITH THE SYRACUSE CITY SCHOOL DISTRICT DESIGN MANUAL AND THE SYRACUSE CITY SCHOOL DISTRICT SPECIFICATIONS.
12. ALL WORK SHALL BE IN ACCORDANCE WITH THE SYRACUSE CITY SCHOOL DISTRICT DESIGN MANUAL AND THE SYRACUSE CITY SCHOOL DISTRICT SPECIFICATIONS.
13. ALL WORK SHALL BE IN ACCORDANCE WITH THE SYRACUSE CITY SCHOOL DISTRICT DESIGN MANUAL AND THE SYRACUSE CITY SCHOOL DISTRICT SPECIFICATIONS.
14. ALL WORK SHALL BE IN ACCORDANCE WITH THE SYRACUSE CITY SCHOOL DISTRICT DESIGN MANUAL AND THE SYRACUSE CITY SCHOOL DISTRICT SPECIFICATIONS.
15. ALL WORK SHALL BE IN ACCORDANCE WITH THE SYRACUSE CITY SCHOOL DISTRICT DESIGN MANUAL AND THE SYRACUSE CITY SCHOOL DISTRICT SPECIFICATIONS.
16. ALL WORK SHALL BE IN ACCORDANCE WITH THE SYRACUSE CITY SCHOOL DISTRICT DESIGN MANUAL AND THE SYRACUSE CITY SCHOOL DISTRICT SPECIFICATIONS.
17. ALL WORK SHALL BE IN ACCORDANCE WITH THE SYRACUSE CITY SCHOOL DISTRICT DESIGN MANUAL AND THE SYRACUSE CITY SCHOOL DISTRICT SPECIFICATIONS.
18. ALL WORK SHALL BE IN ACCORDANCE WITH THE SYRACUSE CITY SCHOOL DISTRICT DESIGN MANUAL AND THE SYRACUSE CITY SCHOOL DISTRICT SPECIFICATIONS.
19. ALL WORK SHALL BE IN ACCORDANCE WITH THE SYRACUSE CITY SCHOOL DISTRICT DESIGN MANUAL AND THE SYRACUSE CITY SCHOOL DISTRICT SPECIFICATIONS.
20. ALL WORK SHALL BE IN ACCORDANCE WITH THE SYRACUSE CITY SCHOOL DISTRICT DESIGN MANUAL AND THE SYRACUSE CITY SCHOOL DISTRICT SPECIFICATIONS.

FLOOR FINISH LEGEND

1. POLISHED CONCRETE FLOOR

2. POLISHED CONCRETE FLOOR WITH POLISHED AGGREGATE

3. POLISHED CONCRETE FLOOR WITH POLISHED AGGREGATE AND POLISHED AGGREGATE

4. POLISHED CONCRETE FLOOR WITH POLISHED AGGREGATE AND POLISHED AGGREGATE

5. POLISHED CONCRETE FLOOR WITH POLISHED AGGREGATE AND POLISHED AGGREGATE

6. POLISHED CONCRETE FLOOR WITH POLISHED AGGREGATE AND POLISHED AGGREGATE

7. POLISHED CONCRETE FLOOR WITH POLISHED AGGREGATE AND POLISHED AGGREGATE

8. POLISHED CONCRETE FLOOR WITH POLISHED AGGREGATE AND POLISHED AGGREGATE

9. POLISHED CONCRETE FLOOR WITH POLISHED AGGREGATE AND POLISHED AGGREGATE

10. POLISHED CONCRETE FLOOR WITH POLISHED AGGREGATE AND POLISHED AGGREGATE

11. POLISHED CONCRETE FLOOR WITH POLISHED AGGREGATE AND POLISHED AGGREGATE

12. POLISHED CONCRETE FLOOR WITH POLISHED AGGREGATE AND POLISHED AGGREGATE

13. POLISHED CONCRETE FLOOR WITH POLISHED AGGREGATE AND POLISHED AGGREGATE

14. POLISHED CONCRETE FLOOR WITH POLISHED AGGREGATE AND POLISHED AGGREGATE

15. POLISHED CONCRETE FLOOR WITH POLISHED AGGREGATE AND POLISHED AGGREGATE

16. POLISHED CONCRETE FLOOR WITH POLISHED AGGREGATE AND POLISHED AGGREGATE

17. POLISHED CONCRETE FLOOR WITH POLISHED AGGREGATE AND POLISHED AGGREGATE

18. POLISHED CONCRETE FLOOR WITH POLISHED AGGREGATE AND POLISHED AGGREGATE

19. POLISHED CONCRETE FLOOR WITH POLISHED AGGREGATE AND POLISHED AGGREGATE

20. POLISHED CONCRETE FLOOR WITH POLISHED AGGREGATE AND POLISHED AGGREGATE



300 State Street, Suite 201
 Rochester, NY 14614
 585-424-8100
 labella.com



COMPLETION OF ALL CHANGES
 CONTRACTOR TO BE RESPONSIBLE FOR
 OBTAINING ALL NECESSARY PERMITS
 AND APPROVALS FROM ALL
 APPLICABLE AGENCIES.



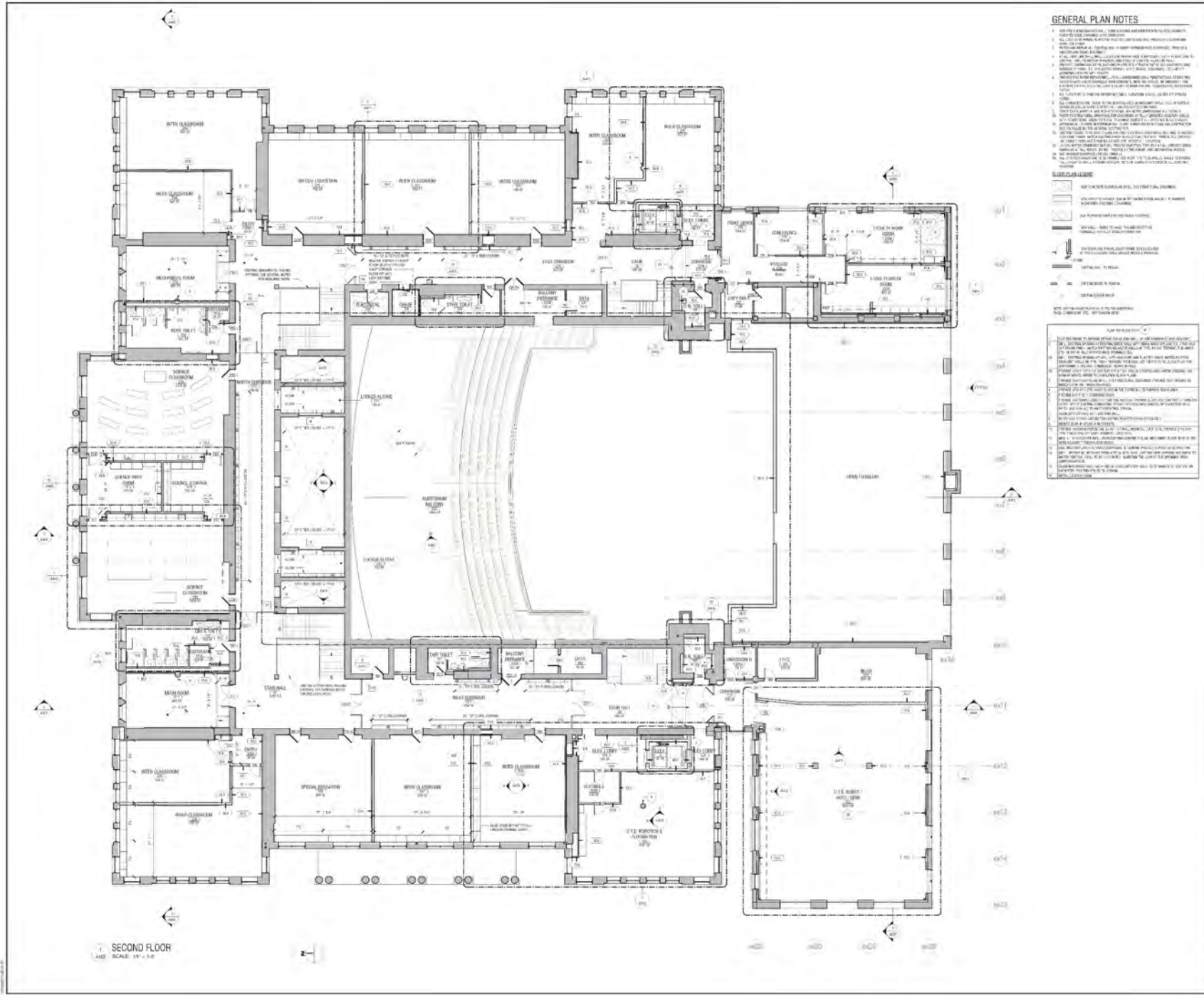
SYRACUSE CITY SCHOOL DISTRICT
 725 Hamilton St.
 Syracuse, NY 13202

SYRACUSE STEAM SCHOOL - RENOVATIONS
 117 HARRISON STREET, SYRACUSE, NY

| | |
|----------------|--------------------|
| PROJECT NUMBER | 222831 |
| DESIGNED BY | LABELLA |
| DATE | 09 |
| SCALE | AS SHOWN |
| DATE | SEPTEMBER 11, 2023 |

FIRST FLOOR PLAN

DATE PLOTTED



SECOND FLOOR
SCALE: 1/4" = 1'-0"

GENERAL PLAN NOTES

1. ALL WORK SHALL BE IN ACCORDANCE WITH THE SYRACUSE CITY SCHOOL DISTRICT SPECIFICATIONS AND THE SYRACUSE CITY SCHOOL DISTRICT DESIGN MANUAL.
2. ALL WORK SHALL BE IN ACCORDANCE WITH THE SYRACUSE CITY SCHOOL DISTRICT DESIGN MANUAL AND THE SYRACUSE CITY SCHOOL DISTRICT SPECIFICATIONS.
3. ALL WORK SHALL BE IN ACCORDANCE WITH THE SYRACUSE CITY SCHOOL DISTRICT DESIGN MANUAL AND THE SYRACUSE CITY SCHOOL DISTRICT SPECIFICATIONS.
4. ALL WORK SHALL BE IN ACCORDANCE WITH THE SYRACUSE CITY SCHOOL DISTRICT DESIGN MANUAL AND THE SYRACUSE CITY SCHOOL DISTRICT SPECIFICATIONS.
5. ALL WORK SHALL BE IN ACCORDANCE WITH THE SYRACUSE CITY SCHOOL DISTRICT DESIGN MANUAL AND THE SYRACUSE CITY SCHOOL DISTRICT SPECIFICATIONS.
6. ALL WORK SHALL BE IN ACCORDANCE WITH THE SYRACUSE CITY SCHOOL DISTRICT DESIGN MANUAL AND THE SYRACUSE CITY SCHOOL DISTRICT SPECIFICATIONS.
7. ALL WORK SHALL BE IN ACCORDANCE WITH THE SYRACUSE CITY SCHOOL DISTRICT DESIGN MANUAL AND THE SYRACUSE CITY SCHOOL DISTRICT SPECIFICATIONS.
8. ALL WORK SHALL BE IN ACCORDANCE WITH THE SYRACUSE CITY SCHOOL DISTRICT DESIGN MANUAL AND THE SYRACUSE CITY SCHOOL DISTRICT SPECIFICATIONS.
9. ALL WORK SHALL BE IN ACCORDANCE WITH THE SYRACUSE CITY SCHOOL DISTRICT DESIGN MANUAL AND THE SYRACUSE CITY SCHOOL DISTRICT SPECIFICATIONS.
10. ALL WORK SHALL BE IN ACCORDANCE WITH THE SYRACUSE CITY SCHOOL DISTRICT DESIGN MANUAL AND THE SYRACUSE CITY SCHOOL DISTRICT SPECIFICATIONS.
11. ALL WORK SHALL BE IN ACCORDANCE WITH THE SYRACUSE CITY SCHOOL DISTRICT DESIGN MANUAL AND THE SYRACUSE CITY SCHOOL DISTRICT SPECIFICATIONS.
12. ALL WORK SHALL BE IN ACCORDANCE WITH THE SYRACUSE CITY SCHOOL DISTRICT DESIGN MANUAL AND THE SYRACUSE CITY SCHOOL DISTRICT SPECIFICATIONS.
13. ALL WORK SHALL BE IN ACCORDANCE WITH THE SYRACUSE CITY SCHOOL DISTRICT DESIGN MANUAL AND THE SYRACUSE CITY SCHOOL DISTRICT SPECIFICATIONS.
14. ALL WORK SHALL BE IN ACCORDANCE WITH THE SYRACUSE CITY SCHOOL DISTRICT DESIGN MANUAL AND THE SYRACUSE CITY SCHOOL DISTRICT SPECIFICATIONS.
15. ALL WORK SHALL BE IN ACCORDANCE WITH THE SYRACUSE CITY SCHOOL DISTRICT DESIGN MANUAL AND THE SYRACUSE CITY SCHOOL DISTRICT SPECIFICATIONS.
16. ALL WORK SHALL BE IN ACCORDANCE WITH THE SYRACUSE CITY SCHOOL DISTRICT DESIGN MANUAL AND THE SYRACUSE CITY SCHOOL DISTRICT SPECIFICATIONS.
17. ALL WORK SHALL BE IN ACCORDANCE WITH THE SYRACUSE CITY SCHOOL DISTRICT DESIGN MANUAL AND THE SYRACUSE CITY SCHOOL DISTRICT SPECIFICATIONS.
18. ALL WORK SHALL BE IN ACCORDANCE WITH THE SYRACUSE CITY SCHOOL DISTRICT DESIGN MANUAL AND THE SYRACUSE CITY SCHOOL DISTRICT SPECIFICATIONS.
19. ALL WORK SHALL BE IN ACCORDANCE WITH THE SYRACUSE CITY SCHOOL DISTRICT DESIGN MANUAL AND THE SYRACUSE CITY SCHOOL DISTRICT SPECIFICATIONS.
20. ALL WORK SHALL BE IN ACCORDANCE WITH THE SYRACUSE CITY SCHOOL DISTRICT DESIGN MANUAL AND THE SYRACUSE CITY SCHOOL DISTRICT SPECIFICATIONS.

SYRACUSE CITY SCHOOL DISTRICT
 125 HAMILTON ST.
 SYRACUSE, NY 13202

SYRACUSE CITY SCHOOL DISTRICT
 125 HAMILTON ST.
 SYRACUSE, NY 13202

SYRACUSE CITY SCHOOL DISTRICT
 125 HAMILTON ST.
 SYRACUSE, NY 13202

LaBella
 Powered by partnership

300 State Street, Suite 201
 Rochester, NY 14614
 585-424-8100
 laabella.com

ONONDAGA COUNTY

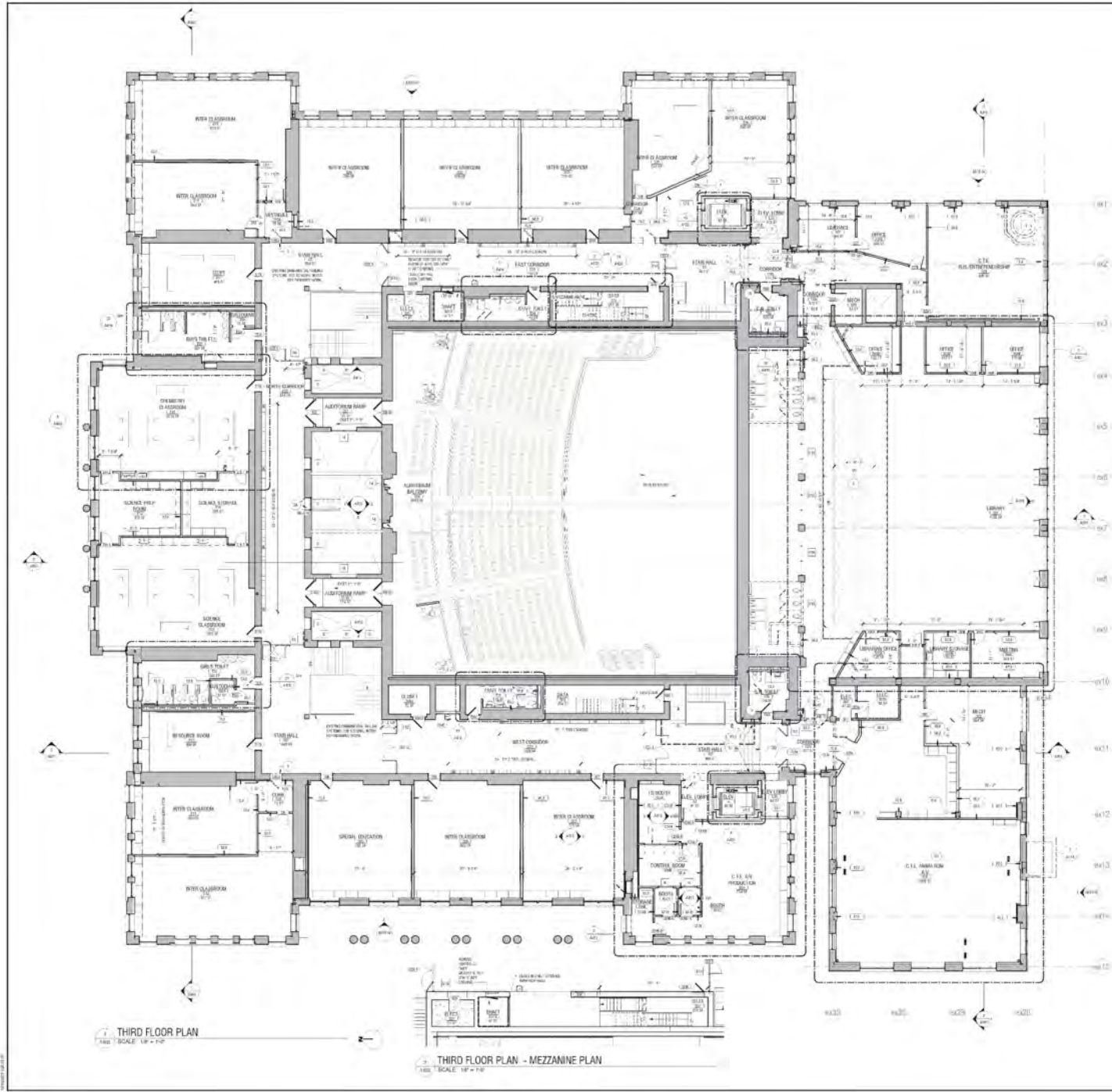
SYRACUSE CITY SCHOOL DISTRICT
 125 HAMILTON ST.
 SYRACUSE, NY 13202

SYRACUSE STEAM SCHOOL - RENOVATIONS
 11 HAMILTON SQUARE STREET, SYRACUSE, NY

PROJECT NO: 220801
 DRAWING NO: LABELLA
 DATE: 09/11/2020
 SCALE: 1/4" = 1'-0"

SECOND FLOOR PLAN

A102



GENERAL PLAN NOTES

1. ALL WORK SHALL BE IN ACCORDANCE WITH THE LATEST EDITIONS OF THE INTERNATIONAL BUILDING CODE (IBC) AND ALL APPLICABLE LOCAL ORDINANCES.
2. ALL WORK SHALL BE IN ACCORDANCE WITH THE LATEST EDITIONS OF THE NATIONAL ELECTRICAL CODE (NEC) AND ALL APPLICABLE LOCAL ORDINANCES.
3. ALL WORK SHALL BE IN ACCORDANCE WITH THE LATEST EDITIONS OF THE NATIONAL FIRE PROTECTION ASSOCIATION (NFPA) 70B AND ALL APPLICABLE LOCAL ORDINANCES.
4. ALL WORK SHALL BE IN ACCORDANCE WITH THE LATEST EDITIONS OF THE NATIONAL MECHANICAL CODE (NMC) AND ALL APPLICABLE LOCAL ORDINANCES.
5. ALL WORK SHALL BE IN ACCORDANCE WITH THE LATEST EDITIONS OF THE NATIONAL PLUMBING CODE (NPC) AND ALL APPLICABLE LOCAL ORDINANCES.
6. ALL WORK SHALL BE IN ACCORDANCE WITH THE LATEST EDITIONS OF THE NATIONAL GAS CODE (NGC) AND ALL APPLICABLE LOCAL ORDINANCES.
7. ALL WORK SHALL BE IN ACCORDANCE WITH THE LATEST EDITIONS OF THE NATIONAL HAZARDOUS WASTE OPERATIONS AND EMERGENCY RESPONSE (HAZOP) AND ALL APPLICABLE LOCAL ORDINANCES.
8. ALL WORK SHALL BE IN ACCORDANCE WITH THE LATEST EDITIONS OF THE NATIONAL SAFETY CODE (NSC) AND ALL APPLICABLE LOCAL ORDINANCES.
9. ALL WORK SHALL BE IN ACCORDANCE WITH THE LATEST EDITIONS OF THE NATIONAL CONSTRUCTION CODE (NCC) AND ALL APPLICABLE LOCAL ORDINANCES.
10. ALL WORK SHALL BE IN ACCORDANCE WITH THE LATEST EDITIONS OF THE NATIONAL ELECTRICAL AND MECHANICAL CODES (NEMC) AND ALL APPLICABLE LOCAL ORDINANCES.
11. ALL WORK SHALL BE IN ACCORDANCE WITH THE LATEST EDITIONS OF THE NATIONAL FIRE AND LIFE SAFETY CODE (NFLSC) AND ALL APPLICABLE LOCAL ORDINANCES.
12. ALL WORK SHALL BE IN ACCORDANCE WITH THE LATEST EDITIONS OF THE NATIONAL BUILDING CODE (NBC) AND ALL APPLICABLE LOCAL ORDINANCES.
13. ALL WORK SHALL BE IN ACCORDANCE WITH THE LATEST EDITIONS OF THE NATIONAL ELECTRICAL AND MECHANICAL CODES (NEMC) AND ALL APPLICABLE LOCAL ORDINANCES.
14. ALL WORK SHALL BE IN ACCORDANCE WITH THE LATEST EDITIONS OF THE NATIONAL FIRE AND LIFE SAFETY CODE (NFLSC) AND ALL APPLICABLE LOCAL ORDINANCES.
15. ALL WORK SHALL BE IN ACCORDANCE WITH THE LATEST EDITIONS OF THE NATIONAL BUILDING CODE (NBC) AND ALL APPLICABLE LOCAL ORDINANCES.

ALL WORK SHALL BE IN ACCORDANCE WITH THE LATEST EDITIONS OF THE NATIONAL BUILDING CODE (IBC) AND ALL APPLICABLE LOCAL ORDINANCES.

ALL WORK SHALL BE IN ACCORDANCE WITH THE LATEST EDITIONS OF THE NATIONAL ELECTRICAL CODE (NEC) AND ALL APPLICABLE LOCAL ORDINANCES.

ALL WORK SHALL BE IN ACCORDANCE WITH THE LATEST EDITIONS OF THE NATIONAL FIRE PROTECTION ASSOCIATION (NFPA) 70B AND ALL APPLICABLE LOCAL ORDINANCES.

ALL WORK SHALL BE IN ACCORDANCE WITH THE LATEST EDITIONS OF THE NATIONAL MECHANICAL CODE (NMC) AND ALL APPLICABLE LOCAL ORDINANCES.

ALL WORK SHALL BE IN ACCORDANCE WITH THE LATEST EDITIONS OF THE NATIONAL PLUMBING CODE (NPC) AND ALL APPLICABLE LOCAL ORDINANCES.

ALL WORK SHALL BE IN ACCORDANCE WITH THE LATEST EDITIONS OF THE NATIONAL GAS CODE (NGC) AND ALL APPLICABLE LOCAL ORDINANCES.

ALL WORK SHALL BE IN ACCORDANCE WITH THE LATEST EDITIONS OF THE NATIONAL HAZARDOUS WASTE OPERATIONS AND EMERGENCY RESPONSE (HAZOP) AND ALL APPLICABLE LOCAL ORDINANCES.

ALL WORK SHALL BE IN ACCORDANCE WITH THE LATEST EDITIONS OF THE NATIONAL SAFETY CODE (NSC) AND ALL APPLICABLE LOCAL ORDINANCES.

ALL WORK SHALL BE IN ACCORDANCE WITH THE LATEST EDITIONS OF THE NATIONAL CONSTRUCTION CODE (NCC) AND ALL APPLICABLE LOCAL ORDINANCES.

ALL WORK SHALL BE IN ACCORDANCE WITH THE LATEST EDITIONS OF THE NATIONAL ELECTRICAL AND MECHANICAL CODES (NEMC) AND ALL APPLICABLE LOCAL ORDINANCES.

ALL WORK SHALL BE IN ACCORDANCE WITH THE LATEST EDITIONS OF THE NATIONAL FIRE AND LIFE SAFETY CODE (NFLSC) AND ALL APPLICABLE LOCAL ORDINANCES.

ALL WORK SHALL BE IN ACCORDANCE WITH THE LATEST EDITIONS OF THE NATIONAL BUILDING CODE (NBC) AND ALL APPLICABLE LOCAL ORDINANCES.



300 State Street, Suite 201
 Rochester, NY 14614
 585-424-8100
 labella.com



SYRACUSE CITY SCHOOL DISTRICT
 775 Madison St.
 Syracuse, NY 13202



SYRACUSE CITY SCHOOL DISTRICT
 775 Madison St.
 Syracuse, NY 13202

SYRACUSE STEAM SCHOOL - RENOVATIONS
 117 ARDENWOOD STREET, SYRACUSE, NY

| | |
|-------------|--------------------|
| PROJECT NO. | 220891 |
| DESIGNED BY | LABELLA |
| DATE | 09/11/2020 |
| SCALE | 1/8" = 1'-0" |
| DATE | SEPTEMBER 11, 2020 |

THIRD FLOOR PLAN



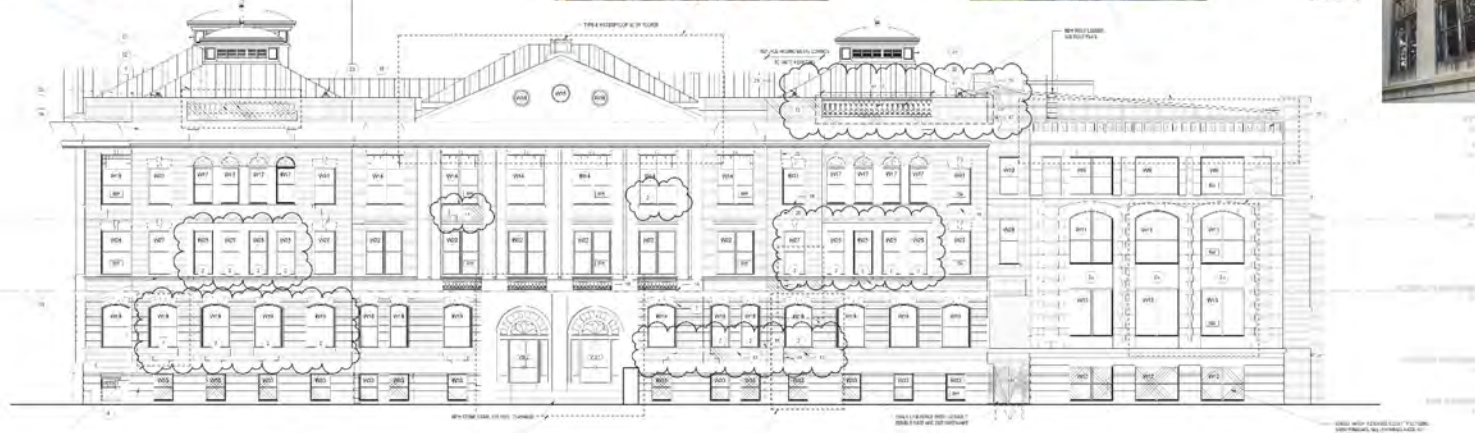
WINDSCUP CORNER
ROOF VENTILATION
WINDSCUP CORNER
ROOF VENTILATION



STEEL CORNER
CORNER BRACKET
STEEL CORNER
CORNER BRACKET



BRICK ROOF
METAL ROOFING
METAL ROOFING



ELEVATION-WEST (WARREN STREET)
SCALE: 1/4" = 1'-0"



GENERAL ELEVATION NOTES

1. THIS ELEVATION IS A REPRESENTATION OF THE EXISTING BUILDING AND DOES NOT INDICATE THE LOCATION OF ANY STRUCTURAL OR MECHANICAL ELEMENTS.
2. THE LOCATION OF ANY STRUCTURAL OR MECHANICAL ELEMENTS SHALL BE INDICATED BY THE ARCHITECT.
3. THE ARCHITECT SHALL BE RESPONSIBLE FOR OBTAINING ALL NECESSARY PERMITS AND APPROVALS.
4. THE ARCHITECT SHALL BE RESPONSIBLE FOR OBTAINING ALL NECESSARY PERMITS AND APPROVALS.

LEGEND



MASONRY RESTORATION NOTES:

1. ALL MASONRY SHALL BE RESTORED TO ORIGINAL CONDITION OR BETTER.
2. ALL MASONRY SHALL BE RESTORED TO ORIGINAL CONDITION OR BETTER.
3. ALL MASONRY SHALL BE RESTORED TO ORIGINAL CONDITION OR BETTER.
4. ALL MASONRY SHALL BE RESTORED TO ORIGINAL CONDITION OR BETTER.
5. ALL MASONRY SHALL BE RESTORED TO ORIGINAL CONDITION OR BETTER.
6. ALL MASONRY SHALL BE RESTORED TO ORIGINAL CONDITION OR BETTER.
7. ALL MASONRY SHALL BE RESTORED TO ORIGINAL CONDITION OR BETTER.
8. ALL MASONRY SHALL BE RESTORED TO ORIGINAL CONDITION OR BETTER.
9. ALL MASONRY SHALL BE RESTORED TO ORIGINAL CONDITION OR BETTER.
10. ALL MASONRY SHALL BE RESTORED TO ORIGINAL CONDITION OR BETTER.
11. ALL MASONRY SHALL BE RESTORED TO ORIGINAL CONDITION OR BETTER.
12. ALL MASONRY SHALL BE RESTORED TO ORIGINAL CONDITION OR BETTER.
13. ALL MASONRY SHALL BE RESTORED TO ORIGINAL CONDITION OR BETTER.
14. ALL MASONRY SHALL BE RESTORED TO ORIGINAL CONDITION OR BETTER.
15. ALL MASONRY SHALL BE RESTORED TO ORIGINAL CONDITION OR BETTER.
16. ALL MASONRY SHALL BE RESTORED TO ORIGINAL CONDITION OR BETTER.
17. ALL MASONRY SHALL BE RESTORED TO ORIGINAL CONDITION OR BETTER.
18. ALL MASONRY SHALL BE RESTORED TO ORIGINAL CONDITION OR BETTER.
19. ALL MASONRY SHALL BE RESTORED TO ORIGINAL CONDITION OR BETTER.
20. ALL MASONRY SHALL BE RESTORED TO ORIGINAL CONDITION OR BETTER.

DECORATIVE METALWORK RESTORATION NOTES:

1. ALL DECORATIVE METALWORK SHALL BE RESTORED TO ORIGINAL CONDITION OR BETTER.
2. ALL DECORATIVE METALWORK SHALL BE RESTORED TO ORIGINAL CONDITION OR BETTER.
3. ALL DECORATIVE METALWORK SHALL BE RESTORED TO ORIGINAL CONDITION OR BETTER.
4. ALL DECORATIVE METALWORK SHALL BE RESTORED TO ORIGINAL CONDITION OR BETTER.
5. ALL DECORATIVE METALWORK SHALL BE RESTORED TO ORIGINAL CONDITION OR BETTER.
6. ALL DECORATIVE METALWORK SHALL BE RESTORED TO ORIGINAL CONDITION OR BETTER.
7. ALL DECORATIVE METALWORK SHALL BE RESTORED TO ORIGINAL CONDITION OR BETTER.
8. ALL DECORATIVE METALWORK SHALL BE RESTORED TO ORIGINAL CONDITION OR BETTER.
9. ALL DECORATIVE METALWORK SHALL BE RESTORED TO ORIGINAL CONDITION OR BETTER.
10. ALL DECORATIVE METALWORK SHALL BE RESTORED TO ORIGINAL CONDITION OR BETTER.
11. ALL DECORATIVE METALWORK SHALL BE RESTORED TO ORIGINAL CONDITION OR BETTER.
12. ALL DECORATIVE METALWORK SHALL BE RESTORED TO ORIGINAL CONDITION OR BETTER.
13. ALL DECORATIVE METALWORK SHALL BE RESTORED TO ORIGINAL CONDITION OR BETTER.
14. ALL DECORATIVE METALWORK SHALL BE RESTORED TO ORIGINAL CONDITION OR BETTER.
15. ALL DECORATIVE METALWORK SHALL BE RESTORED TO ORIGINAL CONDITION OR BETTER.
16. ALL DECORATIVE METALWORK SHALL BE RESTORED TO ORIGINAL CONDITION OR BETTER.
17. ALL DECORATIVE METALWORK SHALL BE RESTORED TO ORIGINAL CONDITION OR BETTER.
18. ALL DECORATIVE METALWORK SHALL BE RESTORED TO ORIGINAL CONDITION OR BETTER.
19. ALL DECORATIVE METALWORK SHALL BE RESTORED TO ORIGINAL CONDITION OR BETTER.
20. ALL DECORATIVE METALWORK SHALL BE RESTORED TO ORIGINAL CONDITION OR BETTER.

KEY PLAN



300 South Street, Suite 201
Rochester, NY 14614
Tel: 585-434-6300
labella.com



ONONDAGA COUNTY
SYRACUSE CITY SCHOOL DISTRICT

SYRACUSE STEAM SCHOOL - RENOVATIONS
717 SOUTH WARREN STREET, SYRACUSE, NY

SYRACUSE STEAM SCHOOL - RENOVATIONS
717 SOUTH WARREN STREET, SYRACUSE, NY

| NO. | DATE | DESCRIPTION |
|-----|------------|-------------------|
| 1 | 09/11/2020 | ISSUED FOR PERMIT |
| 2 | 09/11/2020 | ISSUED FOR PERMIT |
| 3 | 09/11/2020 | ISSUED FOR PERMIT |
| 4 | 09/11/2020 | ISSUED FOR PERMIT |
| 5 | 09/11/2020 | ISSUED FOR PERMIT |
| 6 | 09/11/2020 | ISSUED FOR PERMIT |
| 7 | 09/11/2020 | ISSUED FOR PERMIT |
| 8 | 09/11/2020 | ISSUED FOR PERMIT |
| 9 | 09/11/2020 | ISSUED FOR PERMIT |
| 10 | 09/11/2020 | ISSUED FOR PERMIT |
| 11 | 09/11/2020 | ISSUED FOR PERMIT |
| 12 | 09/11/2020 | ISSUED FOR PERMIT |
| 13 | 09/11/2020 | ISSUED FOR PERMIT |
| 14 | 09/11/2020 | ISSUED FOR PERMIT |
| 15 | 09/11/2020 | ISSUED FOR PERMIT |
| 16 | 09/11/2020 | ISSUED FOR PERMIT |
| 17 | 09/11/2020 | ISSUED FOR PERMIT |
| 18 | 09/11/2020 | ISSUED FOR PERMIT |
| 19 | 09/11/2020 | ISSUED FOR PERMIT |
| 20 | 09/11/2020 | ISSUED FOR PERMIT |

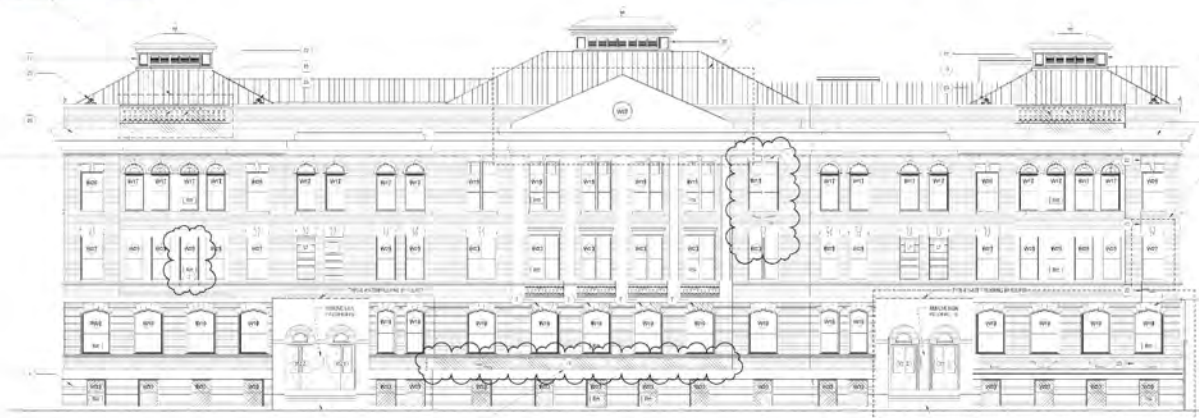
EXTERIOR ELEVATIONS



4TH FLOOR



1ST FLOOR
2ND FLOOR
3RD FLOOR



ELEVATION - NORTH (ADAMS STREET)
SCALE: 1/8" = 1'-0"



GENERAL ELEVATION NOTES:

1. THIS ELEVATION IS FOR THE EXTERIOR OF THE BUILDING AND IS NOT TO BE USED FOR INTERIOR FINISHES.
2. ALL DIMENSIONS ARE TO FACE UNLESS OTHERWISE NOTED.
3. ALL MATERIALS AND FINISHES ARE TO BE AS SHOWN.
4. SEE GENERAL NOTES FOR CONSTRUCTION.



MASONRY RESTORATION NOTES:

1. RESTORE ALL MASONRY TO ORIGINAL CONDITION, INCLUDING REPAIRING CRACKS, REPAIRING WEAR AND DISCOLORATION, AND REPAIRING DAMAGED SURFACES.
2. REPAIR ALL CRACKS AND DISCOLORATION TO MATCH ORIGINAL FINISH.
3. REPAIR ALL WEAR AND DISCOLORATION TO MATCH ORIGINAL FINISH.
4. REPAIR ALL WEAR AND DISCOLORATION TO MATCH ORIGINAL FINISH.
5. REPAIR ALL WEAR AND DISCOLORATION TO MATCH ORIGINAL FINISH.
6. REPAIR ALL WEAR AND DISCOLORATION TO MATCH ORIGINAL FINISH.
7. REPAIR ALL WEAR AND DISCOLORATION TO MATCH ORIGINAL FINISH.
8. REPAIR ALL WEAR AND DISCOLORATION TO MATCH ORIGINAL FINISH.
9. REPAIR ALL WEAR AND DISCOLORATION TO MATCH ORIGINAL FINISH.
10. REPAIR ALL WEAR AND DISCOLORATION TO MATCH ORIGINAL FINISH.
11. REPAIR ALL WEAR AND DISCOLORATION TO MATCH ORIGINAL FINISH.
12. REPAIR ALL WEAR AND DISCOLORATION TO MATCH ORIGINAL FINISH.
13. REPAIR ALL WEAR AND DISCOLORATION TO MATCH ORIGINAL FINISH.
14. REPAIR ALL WEAR AND DISCOLORATION TO MATCH ORIGINAL FINISH.
15. REPAIR ALL WEAR AND DISCOLORATION TO MATCH ORIGINAL FINISH.
16. REPAIR ALL WEAR AND DISCOLORATION TO MATCH ORIGINAL FINISH.
17. REPAIR ALL WEAR AND DISCOLORATION TO MATCH ORIGINAL FINISH.
18. REPAIR ALL WEAR AND DISCOLORATION TO MATCH ORIGINAL FINISH.
19. REPAIR ALL WEAR AND DISCOLORATION TO MATCH ORIGINAL FINISH.
20. REPAIR ALL WEAR AND DISCOLORATION TO MATCH ORIGINAL FINISH.

DECORATIVE METALWORK RESTORATION NOTES:

1. RESTORE ALL DECORATIVE METALWORK TO ORIGINAL CONDITION, INCLUDING REPAIRING CRACKS, REPAIRING WEAR AND DISCOLORATION, AND REPAIRING DAMAGED SURFACES.
2. REPAIR ALL CRACKS AND DISCOLORATION TO MATCH ORIGINAL FINISH.
3. REPAIR ALL WEAR AND DISCOLORATION TO MATCH ORIGINAL FINISH.
4. REPAIR ALL WEAR AND DISCOLORATION TO MATCH ORIGINAL FINISH.
5. REPAIR ALL WEAR AND DISCOLORATION TO MATCH ORIGINAL FINISH.
6. REPAIR ALL WEAR AND DISCOLORATION TO MATCH ORIGINAL FINISH.
7. REPAIR ALL WEAR AND DISCOLORATION TO MATCH ORIGINAL FINISH.
8. REPAIR ALL WEAR AND DISCOLORATION TO MATCH ORIGINAL FINISH.
9. REPAIR ALL WEAR AND DISCOLORATION TO MATCH ORIGINAL FINISH.
10. REPAIR ALL WEAR AND DISCOLORATION TO MATCH ORIGINAL FINISH.
11. REPAIR ALL WEAR AND DISCOLORATION TO MATCH ORIGINAL FINISH.
12. REPAIR ALL WEAR AND DISCOLORATION TO MATCH ORIGINAL FINISH.
13. REPAIR ALL WEAR AND DISCOLORATION TO MATCH ORIGINAL FINISH.
14. REPAIR ALL WEAR AND DISCOLORATION TO MATCH ORIGINAL FINISH.
15. REPAIR ALL WEAR AND DISCOLORATION TO MATCH ORIGINAL FINISH.
16. REPAIR ALL WEAR AND DISCOLORATION TO MATCH ORIGINAL FINISH.
17. REPAIR ALL WEAR AND DISCOLORATION TO MATCH ORIGINAL FINISH.
18. REPAIR ALL WEAR AND DISCOLORATION TO MATCH ORIGINAL FINISH.
19. REPAIR ALL WEAR AND DISCOLORATION TO MATCH ORIGINAL FINISH.
20. REPAIR ALL WEAR AND DISCOLORATION TO MATCH ORIGINAL FINISH.

1

KEY PLAN

300 State Street, Suite 202
Syracuse, NY 13202
315.454.4100
labella.com

1. THE CITY OF SYRACUSE HAS REVIEWED THIS PLAN AND APPROVED IT FOR THE CITY OF SYRACUSE.
2. THE CITY OF SYRACUSE HAS REVIEWED THIS PLAN AND APPROVED IT FOR THE CITY OF SYRACUSE.

ONONDAGA COUNTY
SYRACUSE CITY SCHOOL DISTRICT
715 BARRETT STREET, SYRACUSE, NY 13202

SYRACUSE STEAM SCHOOL - RENOVATIONS
715 SOUTH BARRETT STREET, SYRACUSE, NY

| | | | |
|--------------|--------------------|-------------|-------------|
| DATE | NOV 11 2020 | NO. REVISED | 0 |
| BY | LABELLA | DATE | NOV 11 2020 |
| PROJECT NO. | 2020001 | | |
| DRAWN BY | LABELLA | | |
| REVIEWED BY | SP | | |
| TITLE | NO | | |
| DATE | SEPTEMBER 11, 2020 | | |
| DATE OF WORK | | | |

EXTERIOR ELEVATIONS

DATE: 11/11/2020



ELEVATION - SOUTH



GENERAL ELEVATION NOTES

- 1. ALL EXTERIOR SURFACES SHALL BE MAINTAINED IN ACCORDANCE WITH THE FOLLOWING NOTES.
- 2. ALL EXTERIOR SURFACES SHALL BE MAINTAINED IN ACCORDANCE WITH THE FOLLOWING NOTES.
- 3. ALL EXTERIOR SURFACES SHALL BE MAINTAINED IN ACCORDANCE WITH THE FOLLOWING NOTES.
- 4. ALL EXTERIOR SURFACES SHALL BE MAINTAINED IN ACCORDANCE WITH THE FOLLOWING NOTES.

LEGEND



MASONRY RESTORATION NOTES

- 1. ALL EXTERIOR MASONRY SHALL BE RESTORED TO ORIGINAL CONDITION OR BETTER.
- 2. ALL EXTERIOR MASONRY SHALL BE RESTORED TO ORIGINAL CONDITION OR BETTER.
- 3. ALL EXTERIOR MASONRY SHALL BE RESTORED TO ORIGINAL CONDITION OR BETTER.
- 4. ALL EXTERIOR MASONRY SHALL BE RESTORED TO ORIGINAL CONDITION OR BETTER.
- 5. ALL EXTERIOR MASONRY SHALL BE RESTORED TO ORIGINAL CONDITION OR BETTER.
- 6. ALL EXTERIOR MASONRY SHALL BE RESTORED TO ORIGINAL CONDITION OR BETTER.
- 7. ALL EXTERIOR MASONRY SHALL BE RESTORED TO ORIGINAL CONDITION OR BETTER.
- 8. ALL EXTERIOR MASONRY SHALL BE RESTORED TO ORIGINAL CONDITION OR BETTER.
- 9. ALL EXTERIOR MASONRY SHALL BE RESTORED TO ORIGINAL CONDITION OR BETTER.
- 10. ALL EXTERIOR MASONRY SHALL BE RESTORED TO ORIGINAL CONDITION OR BETTER.

DECORATIVE METAL WORK RESTORATION NOTES

- 1. ALL EXTERIOR DECORATIVE METAL WORK SHALL BE RESTORED TO ORIGINAL CONDITION OR BETTER.
- 2. ALL EXTERIOR DECORATIVE METAL WORK SHALL BE RESTORED TO ORIGINAL CONDITION OR BETTER.
- 3. ALL EXTERIOR DECORATIVE METAL WORK SHALL BE RESTORED TO ORIGINAL CONDITION OR BETTER.
- 4. ALL EXTERIOR DECORATIVE METAL WORK SHALL BE RESTORED TO ORIGINAL CONDITION OR BETTER.
- 5. ALL EXTERIOR DECORATIVE METAL WORK SHALL BE RESTORED TO ORIGINAL CONDITION OR BETTER.
- 6. ALL EXTERIOR DECORATIVE METAL WORK SHALL BE RESTORED TO ORIGINAL CONDITION OR BETTER.
- 7. ALL EXTERIOR DECORATIVE METAL WORK SHALL BE RESTORED TO ORIGINAL CONDITION OR BETTER.
- 8. ALL EXTERIOR DECORATIVE METAL WORK SHALL BE RESTORED TO ORIGINAL CONDITION OR BETTER.
- 9. ALL EXTERIOR DECORATIVE METAL WORK SHALL BE RESTORED TO ORIGINAL CONDITION OR BETTER.
- 10. ALL EXTERIOR DECORATIVE METAL WORK SHALL BE RESTORED TO ORIGINAL CONDITION OR BETTER.

KEY PLAN

300 West Street, Suite 100
Syracuse, NY 13202
315.462.8327
labella.com



SYRACUSE CITY SCHOOL DISTRICT
170 Madison St.
Syracuse, NY 13202



SYRACUSE CITY SCHOOL DISTRICT
170 Madison St.
Syracuse, NY 13202

SYRACUSE STEAM SCHOOL - RENOVATIONS

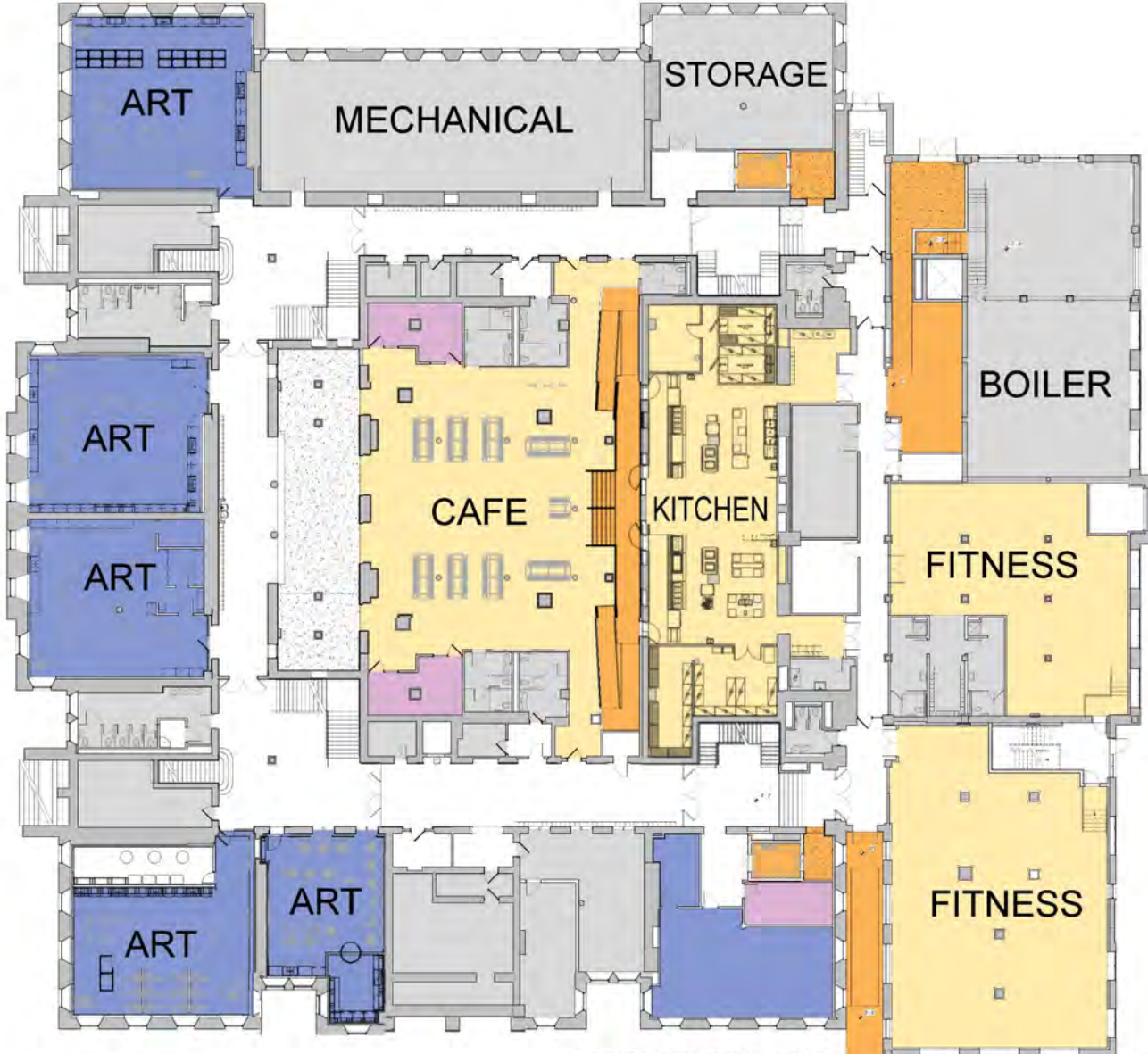
| | |
|-----------|-------------------|
| DATE | DESCRIPTION |
| 10/1/2024 | ISSUED FOR PERMIT |
| 10/1/2024 | ISSUED FOR PERMIT |
| 10/1/2024 | ISSUED FOR PERMIT |
| 10/1/2024 | ISSUED FOR PERMIT |
| 10/1/2024 | ISSUED FOR PERMIT |
| 10/1/2024 | ISSUED FOR PERMIT |
| 10/1/2024 | ISSUED FOR PERMIT |
| 10/1/2024 | ISSUED FOR PERMIT |
| 10/1/2024 | ISSUED FOR PERMIT |
| 10/1/2024 | ISSUED FOR PERMIT |

EXTERIOR ELEVATIONS



**INTERIOR
SCOPE**





KEYING

- ADMINISTRATION SPACES
- ANCILLARY SPACES
- NEW ACCESSIBILITY ELEMENTS
- SPECIAL PROGRAM
- SUPPORT SPACES
- EXISTING WALLS
- NEW WALLS

NOT FOR CONSTRUCTION

CONTRACT NO. ADMINISTRATION SERVICES
CONSTRUCTION ADMINISTRATION SERVICES
LABELLA LLC, 2015
LABELLA.COM

It is a violation of New York State Education Law and 102 NYCRR 100.1 for any person, including any contractor or subcontractor, to prepare or submit any false or misleading information in connection with the procurement of any contract for the provision of any goods or services to the State Education Department or any of its component offices. Any person who violates this provision shall be subject to the penalties provided in Section 102.1 of the Education Law and Section 100.1 of the Regulations of the State Education Department.

© 2015 LaBella Associates



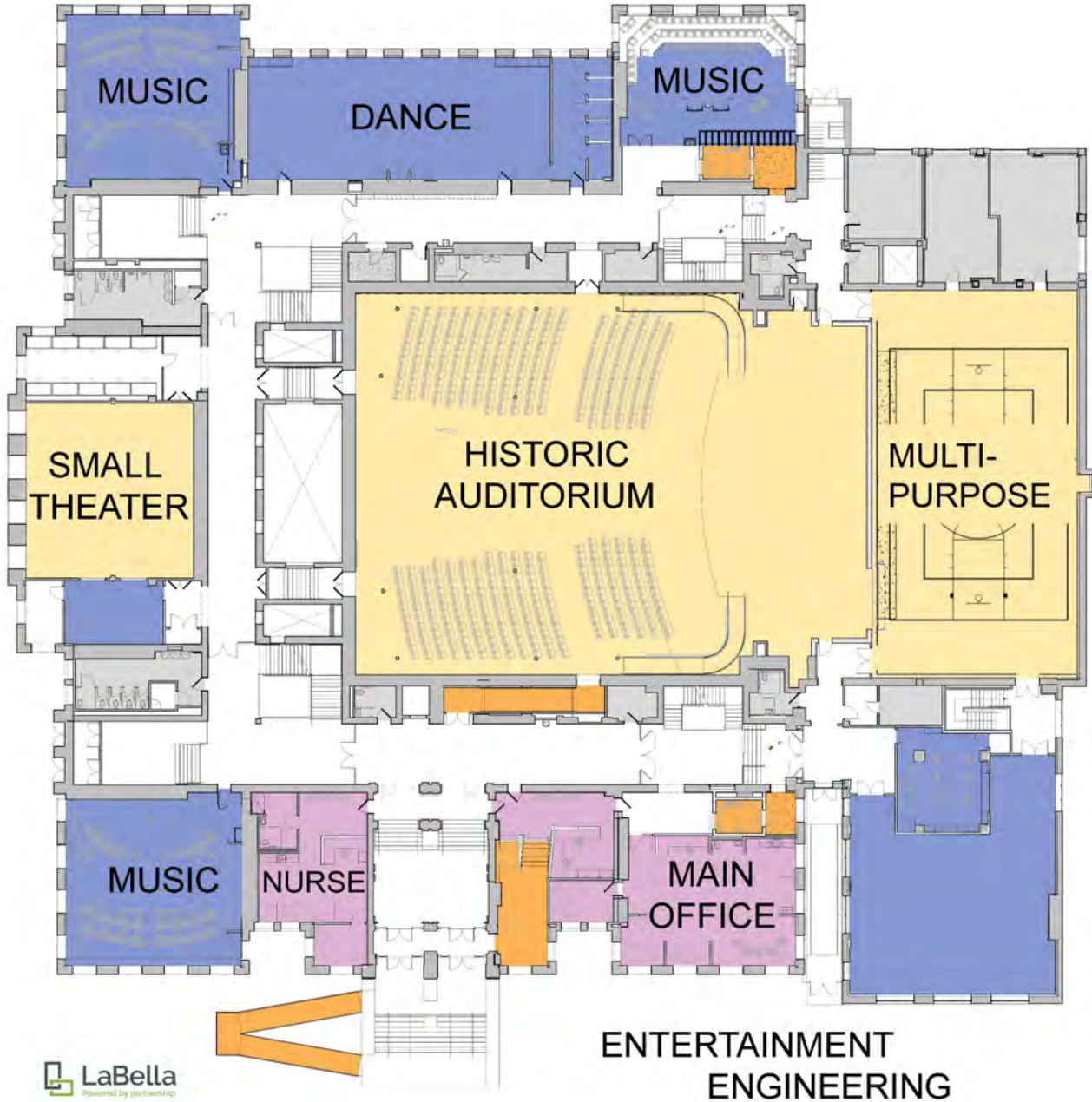
ONONDAGA COUNTY

SYRACUSE CITY SCHOOL DISTRICT
725 Hamilton St.
Syracuse, NY 13210

SYRACUSE STEAM SCHOOL RECONSTRUCTION
717 SOUTH HARRIS STREET, SYRACUSE, NY

| NO. | DATE | DESCRIPTION |
|----------------|------------|-------------|
| | | |
| PROJECT NUMBER | 2215531 | |
| DRAWN BY | Austin | |
| CHECKED BY | Apparicio | |
| DATE | 05/23/2023 | |

BASEMENT FLOOR PLAN



KEYING

- ADMINISTRATION SPACES
- ANCILLARY SPACES
- NEW ACCESSIBILITY ELEMENTS
- SPECIAL PROGRAM
- SUPPORT SPACES
- EXISTING WALLS
- NEW WALLS

NOT FOR CONSTRUCTION

THE RESULTS OF ARCHITECTURAL SERVICES PROVIDED BY ARCHITECTS ARE THE PROPERTY OF ARCHITECTS. NO PART OF THESE SERVICES OR THE RESULTS THEREOF SHALL BE REPRODUCED OR TRANSMITTED IN ANY FORM OR BY ANY MEANS, ELECTRONIC OR MECHANICAL, INCLUDING PHOTOCOPYING, RECORDING, OR BY ANY INFORMATION STORAGE AND RETRIEVAL SYSTEM, WITHOUT THE WRITTEN PERMISSION OF ARCHITECTS.



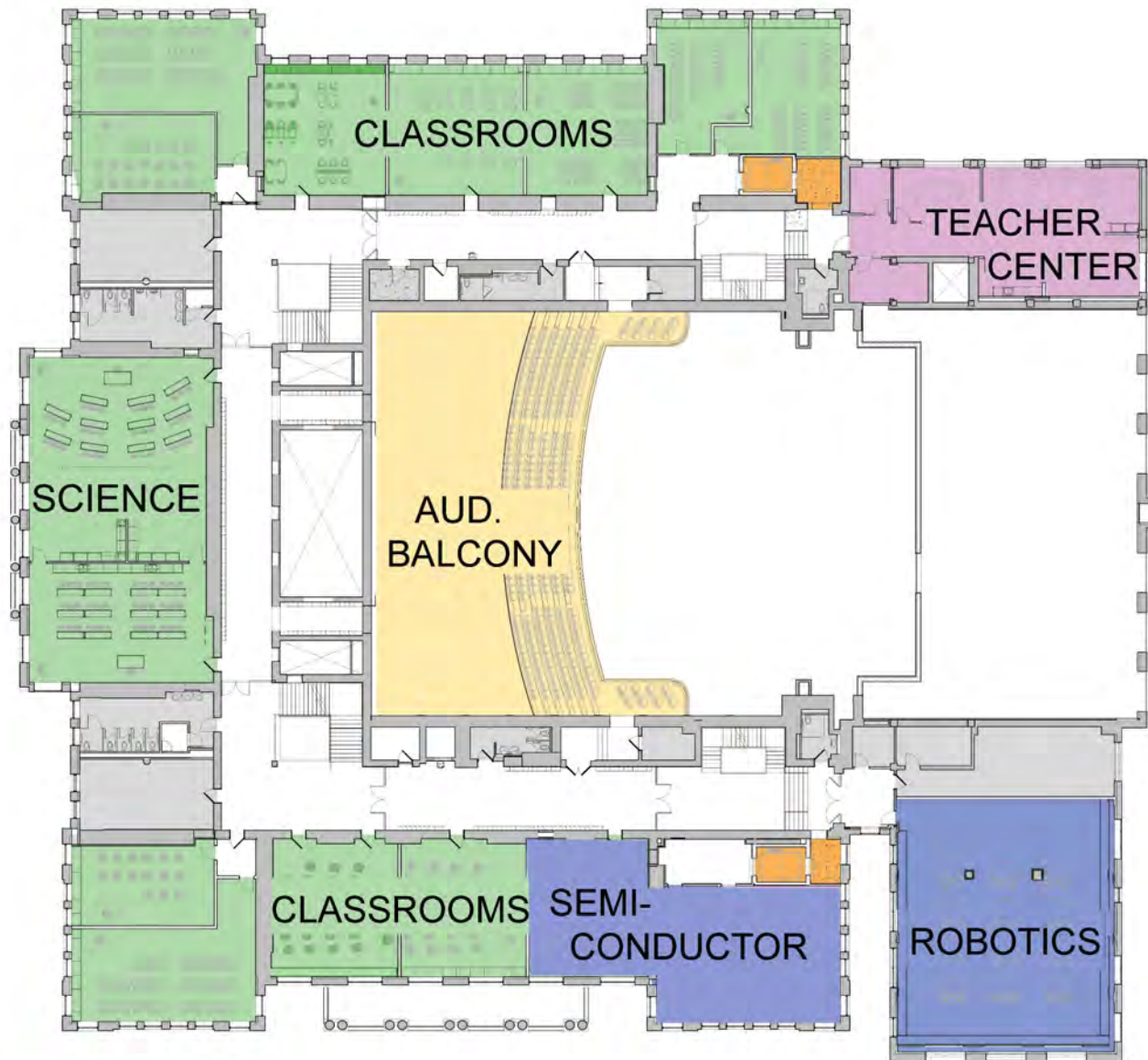
ONONDAGA COUNTY
SYRACUSE CITY SCHOOL DISTRICT
775 Franklin St.
Syracuse, NY 13203

SYRACUSE STEAM SCHOOL RECONSTRUCTION
710 SOUTH WARREN STREET, SYRACUSE, NY

| | | |
|----------------|--------------|-------------|
| NO. | DATE | DESCRIPTION |
| | | |
| PROJECT NUMBER | 2200007 | |
| DESIGNER | Architect | |
| APPROVED BY | Approver | |
| DATE | JAN 28, 2023 | |
| PROJECT NAME | | |

FIRST FLOOR PLAN

① **FIRST FLOOR**



KEYING

- ADMINISTRATION SPACES
- ANCILLARY SPACES
- CLASSROOM
- NEW ACCESSIBILITY ELEMENTS
- SPECIAL EDUCATION
- SPECIAL PROGRAM
- SUPPORT SPACES
- EXISTING WALLS
- NEW WALLS

NOT FOR CONSTRUCTION

STATE OF NEW YORK
OFFICE OF GENERAL SERVICES
ARCHITECTURAL DIVISION
100 STATE STREET
ALBANY, NY 12242

THIS DRAWING IS THE PROPERTY OF THE ARCHITECT. IT IS TO BE USED ONLY FOR THE PROJECT AND SITE SPECIFICALLY IDENTIFIED HEREON. NO PART OF THIS DRAWING IS TO BE REPRODUCED OR TRANSMITTED IN ANY FORM OR BY ANY MEANS, ELECTRONIC OR MECHANICAL, INCLUDING PHOTOCOPYING, RECORDING, OR BY ANY INFORMATION STORAGE AND RETRIEVAL SYSTEM, WITHOUT THE WRITTEN PERMISSION OF THE ARCHITECT.

© 2013 LaBella Architects



ONONDAGA COUNTY

SYRACUSE CITY SCHOOL DISTRICT

725 Franklin St.
Syracuse, NY 13215

SYRACUSE STEAM SCHOOL RECONSTRUCTION
710 SOUTH WARREN STREET, SYRACUSE, NY

| | | |
|----------------|--------------|-------------|
| NO. | DATE | DESCRIPTION |
| | | |
| PROJECT NUMBER | 2200917 | |
| DESIGNER | LaBella | |
| APPROVED BY | | |
| DATE | JAN 28, 2013 | |
| DESIGNED BY | | |

SECOND FLOOR PLAN

2 SECOND FLOOR

NOT FOR CONSTRUCTION

REPRESENTS AN ARCHITECTURAL CONCEPT. THIS PLAN IS NOT TO BE USED FOR CONSTRUCTION. ANY CHANGES TO THIS PLAN SHALL BE THE RESPONSIBILITY OF THE ARCHITECT. THE ARCHITECT SHALL BE RESPONSIBLE FOR OBTAINING ALL NECESSARY PERMITS AND APPROVALS FROM THE APPROPRIATE AGENCIES. THE ARCHITECT SHALL BE RESPONSIBLE FOR OBTAINING ALL NECESSARY PERMITS AND APPROVALS FROM THE APPROPRIATE AGENCIES. THE ARCHITECT SHALL BE RESPONSIBLE FOR OBTAINING ALL NECESSARY PERMITS AND APPROVALS FROM THE APPROPRIATE AGENCIES.

© 2021 LaBella Architects



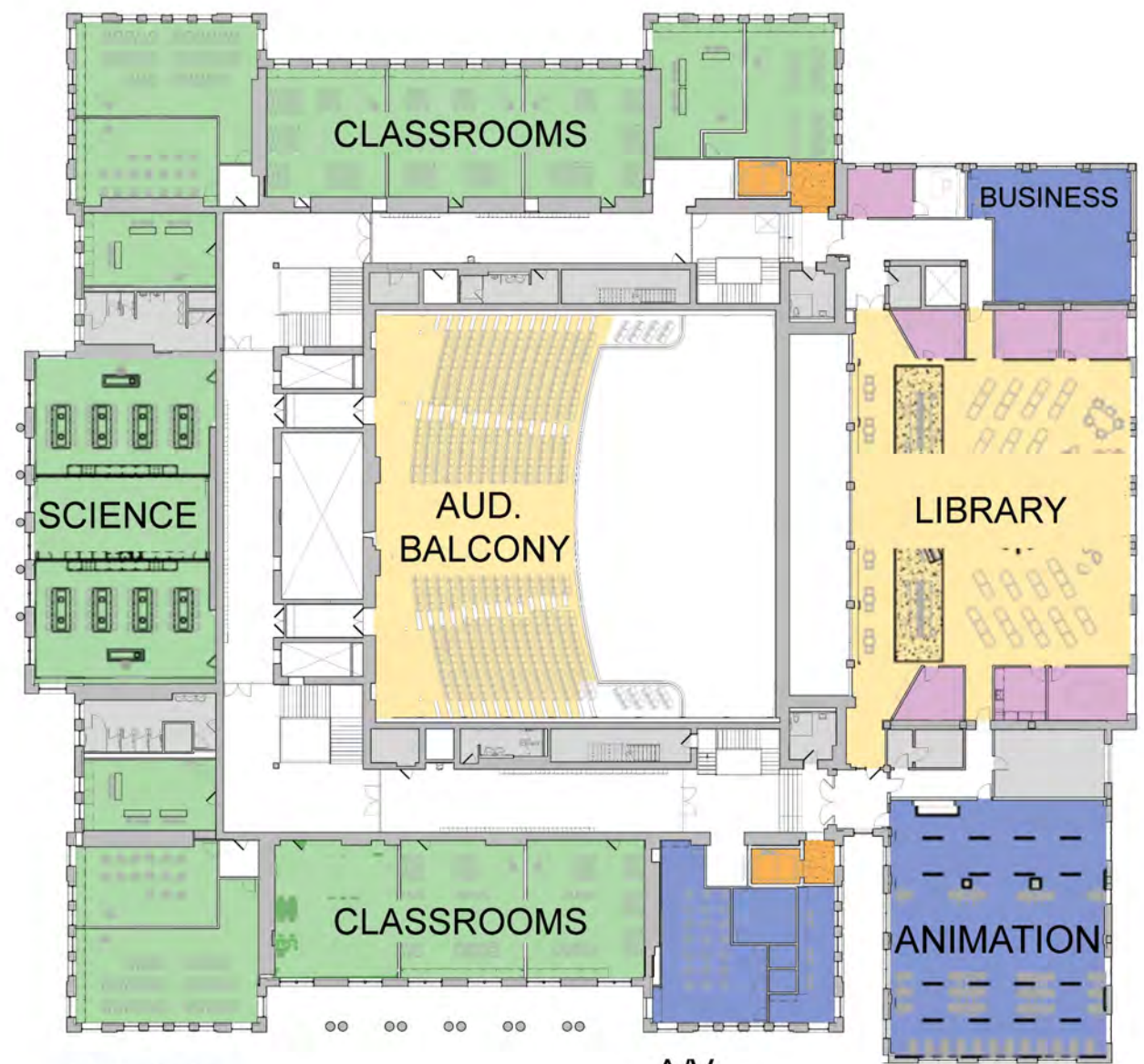
ONONDAGA COUNTY
SYRACUSE CITY SCHOOL DISTRICT
775 Hamilton St.
Syracuse, NY 13202

SYRACUSE STEAM SCHOOL RECONSTRUCTION
717 SOUTH WARREN STREET, SYRACUSE, NY

| NO. | DATE | DESCRIPTION |
|-----|----------|-------------|
| 1 | 02/20/21 | ISSUED |
| 2 | 05/20/21 | REVISED |
| 3 | 06/24/21 | REVISED |

THIRD FLOOR PLAN

100D



- KEYING**
- ADMINISTRATION SPACES
 - ANCILLARY SPACES
 - CLASSROOM
 - NEW ACCESSIBILITY ELEMENTS
 - SPECIAL EDUCATION
 - SPECIAL PROGRAM
 - SUPPORT SPACES
 - EXISTING WALLS
 - NEW WALLS

③ THIRD FLOOR





















NEWS

ART CLUB

ROBOTICS CLUB

The World's Most Fun School Event!
Presented by
42ND STREET
Hosted by
Sponsored by
Friday, March 10, 2017 at 7:30pm
Saturday, March 11, 2017 at 10:00am-12:00pm
The Theater at Warwick Valley High School

DEBATE CLUB TOURNAMENT

MINICRAFT

CHESS CLUB
MEET TUESDAYS
AT 3:30
IN THE
LIBRARY





WHAT'S NEW















